

# COMP211: Computer Networks

---

Martin Gairing

Room 3-03

Ashton Building

Email: [gairing \[at\] liverpool.ac.uk](mailto:gairing@liverpool.ac.uk)

Web: [cgi.csc.liv.ac.uk/~gairing](http://cgi.csc.liv.ac.uk/~gairing)

# Meeting times

## ❖ Lectures:

- Monday 16:00-17:00
- Tuesday 14:00-15:00
- Thursday 9:00-10:00

## ❖ Demonstrations:

- Only in weeks 2 - 6

## ▪ Module Webpage:

- [cgi.csc.liv.ac.uk/~gairing/COMP211](http://cgi.csc.liv.ac.uk/~gairing/COMP211)

# Course Aims

---

To introduce networked computer systems in general and the Internet in particular:

- ❖ The basic operating principles
- ❖ The design and organization principles of successful computer networks
- ❖ The key protocols and technologies used in the Internet.

# Learning Outcomes

---

*Upon completion, you should:*

- ❖ be able to describe and justify the OSI Reference Model and the key protocols that govern the Internet.
- ❖ be able to program applications and protocols for computer networks.
- ❖ be able to illustrate and debate the use and need of cryptographic techniques in network security.



# Text Books

- ❖ J. F. Kurose & K. W. Ross:  
*Computer Networking:  
A Top-Down Approach.*  
(Addison Wesley)
- ❖ A. S. Tanenbaum:  
*Computer Networks.*  
(Pearson)

# Assessment

- ❖ Final Exam: 80%
  - 2 hours long
  - MCQ
  - Mock exam on module webpage
  
- ❖ Continuous Assessment: 20%
  - 2 programming assignments
    - Assignment 1:
      - Due: 18 Oct
    - Assignment 2:
      - Due: 1 Nov
  - We check for PLAGARISM and COLLUSION.

All dates are  
expected dates.

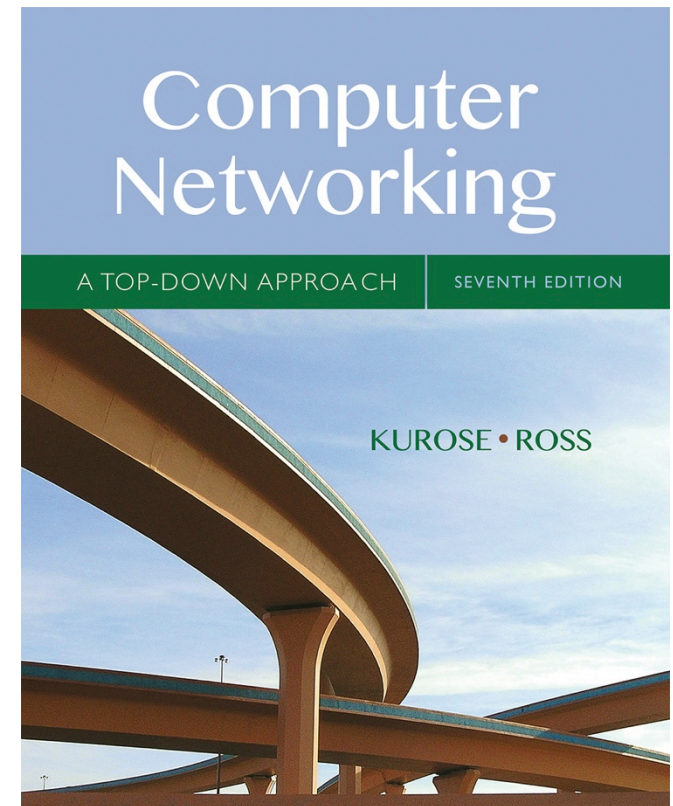
# Main Themes

- ❖ No one designed the Internet, no one owns it, and no one can see across it all.
  - It just grew and grew and grew . . .
  - We try to make sense of it by imposing a structure (a series of layers) on it.
- ❖ The Internet is flawed and unreliable
  - So we have to be clever in how we use it.
- ❖ Designing applications for the Internet means making choices
  - And choices have consequences.

# Chapter I

## Introduction

© All material copyright 1996-2016  
J.F Kurose and K.W. Ross, All Rights Reserved



## *Computer Networking: A Top Down Approach*

7<sup>th</sup> edition

Jim Kurose, Keith Ross

Pearson/Addison Wesley

April 2016

# Chapter 1: introduction

## *our goal:*

- get “feel” and terminology
- more depth, detail *later* in course
- approach:
  - use Internet as example

## *overview:*

- what’s the Internet?
- what’s a protocol?
- network edge; hosts, access net, physical media
- network core: packet/circuit switching, Internet structure
- performance: loss, delay, throughput
- security
- protocol layers, service models
- history

# Chapter 1: roadmap

## 1.1 *what is the Internet?*

## 1.2 network edge

- end systems, access networks, links

## 1.3 network core

- packet switching, circuit switching, network structure

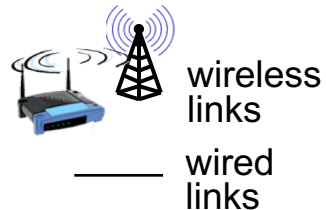
## 1.4 delay, loss, throughput in networks

## 1.5 protocol layers, service models

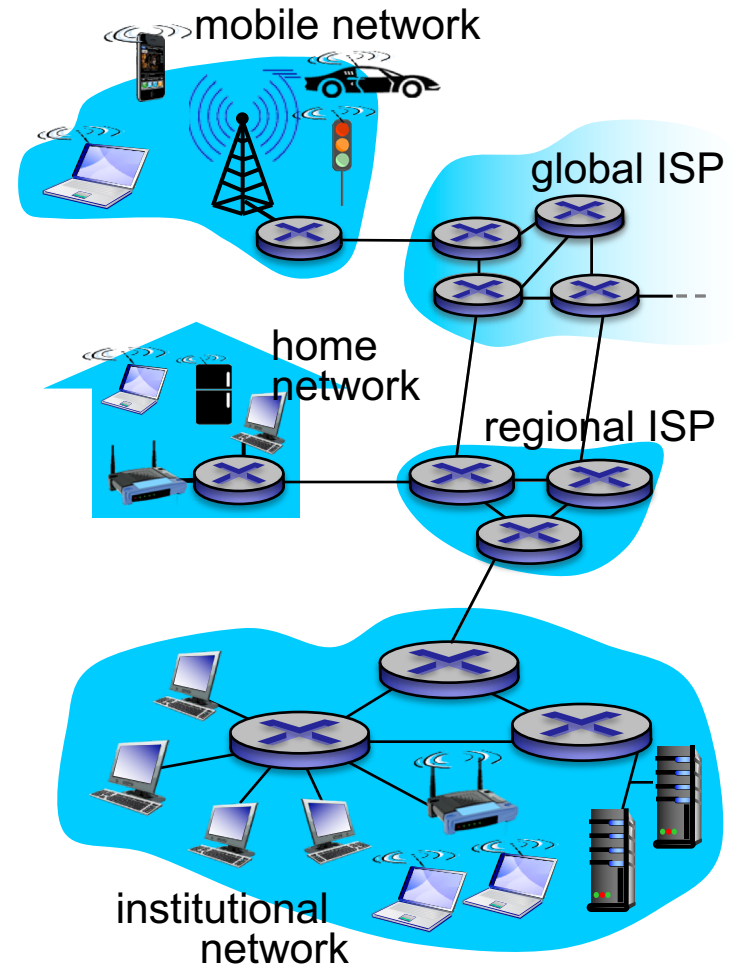
## 1.6 networks under attack: security

## 1.7 history

# What's the Internet: “nuts and bolts” view



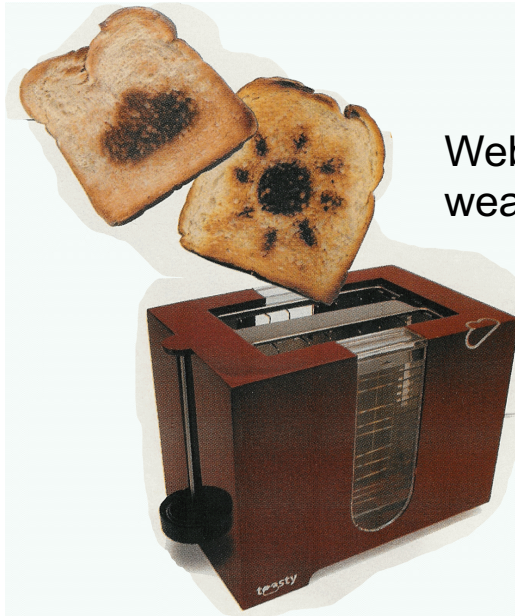
- ❖ billions of connected computing devices:
  - *hosts* = *end systems*
  - running *network apps*
- *communication links*
  - fiber, copper, radio, satellite
  - transmission rate: *bandwidth*
- *packet switches*: forward packets (chunks of data)
  - *routers* and *switches*



# “Fun” Internet-connected devices



IP picture frame  
<http://www.ceiva.com/>



Web-enabled toaster +  
weather forecaster



Tweet-a-watt:  
monitor energy use



Internet  
refrigerator



Slingbox: watch,  
control cable TV remotely



sensorized,  
bed  
mattress

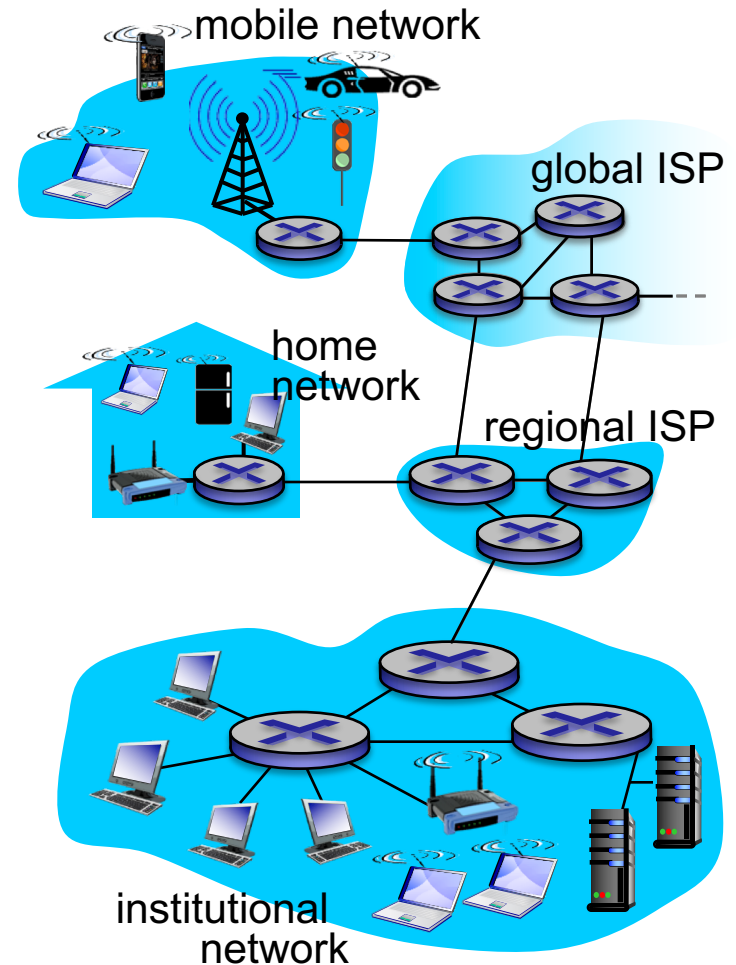


Internet phones



# What's the Internet: “nuts and bolts” view

- ❖ *Internet: “network of networks”*
  - Interconnected ISPs
- ❖ *protocols* control sending, receiving of messages
  - e.g., TCP, IP, HTTP, Skype, 802.11
- ❖ *Internet standards*
  - RFC: Request for comments
  - IETF: Internet Engineering Task Force



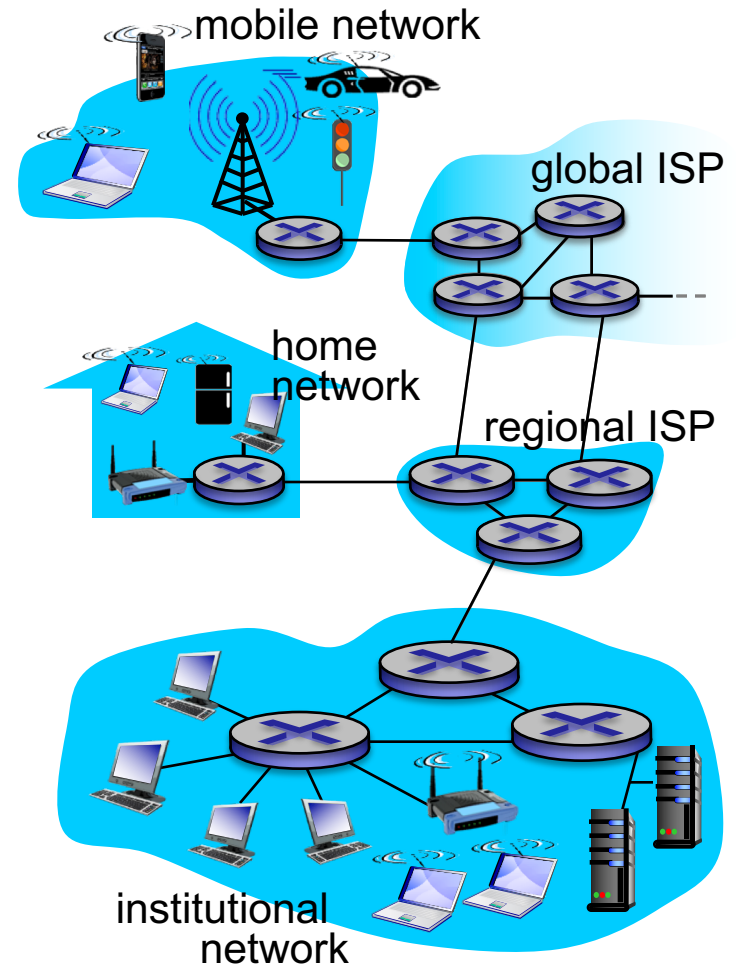
# What's the Internet: a service view

## ❖ *infrastructure that provides services to applications:*

- Web, VoIP, email, games, e-commerce, social nets, ...

## ❖ *provides programming interface to apps*

- hooks that allow sending and receiving app programs to “connect” to Internet
- provides service options, analogous to postal service



# What's a protocol?

## *human protocols:*

- “what's the time?”
- “I have a question”
- introductions

... specific messages sent

... specific actions taken  
when messages  
received, or other  
events

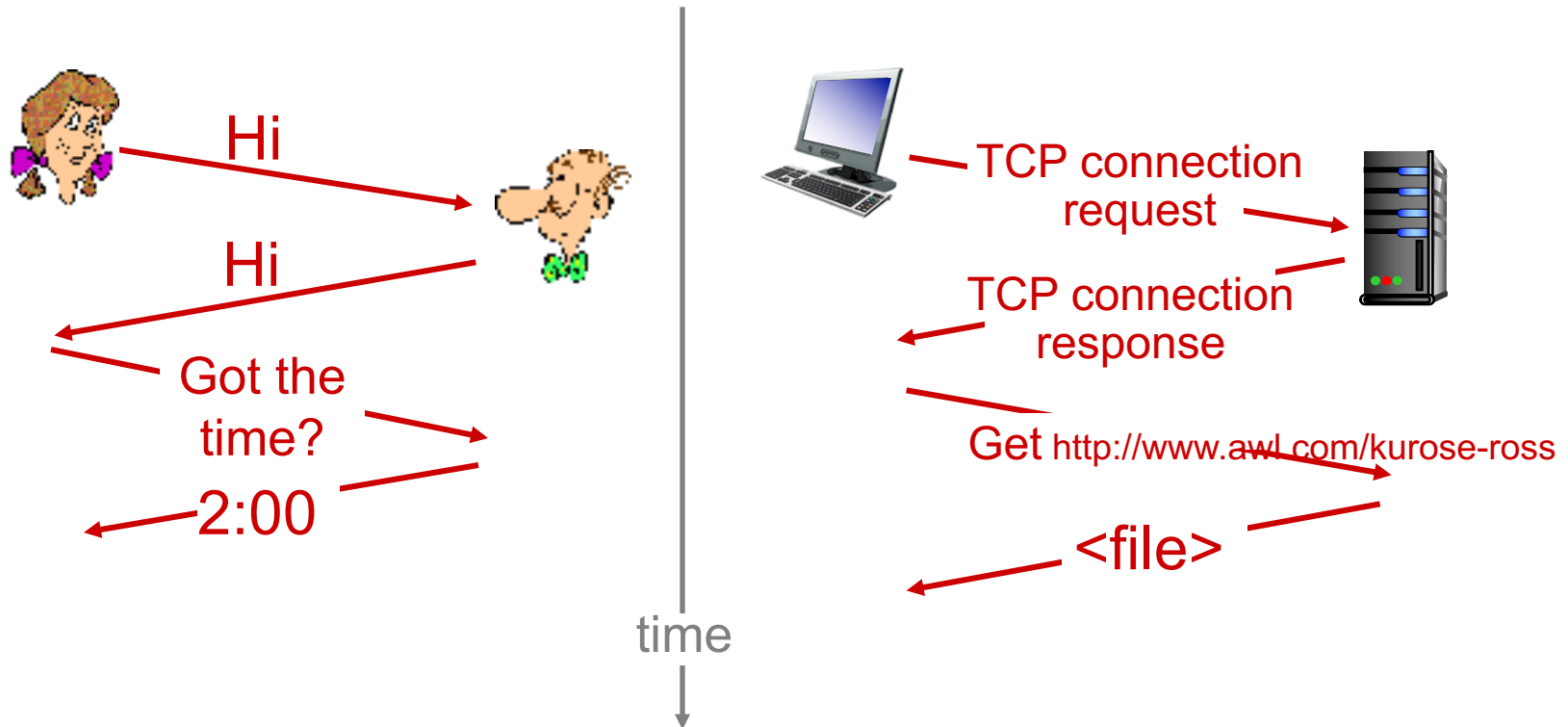
## *network protocols:*

- machines rather than humans
- all communication activity in Internet governed by protocols

*protocols define format, order of messages sent and received among network entities, and actions taken on message transmission, receipt*

# What's a protocol?

a human protocol and a computer network protocol:



**Q:** other human protocols?

# Chapter 1: roadmap

1.1 what is the Internet?

1.2 network edge

- end systems, access networks, links

1.3 network core

- packet switching, circuit switching, network structure

1.4 delay, loss, throughput in networks

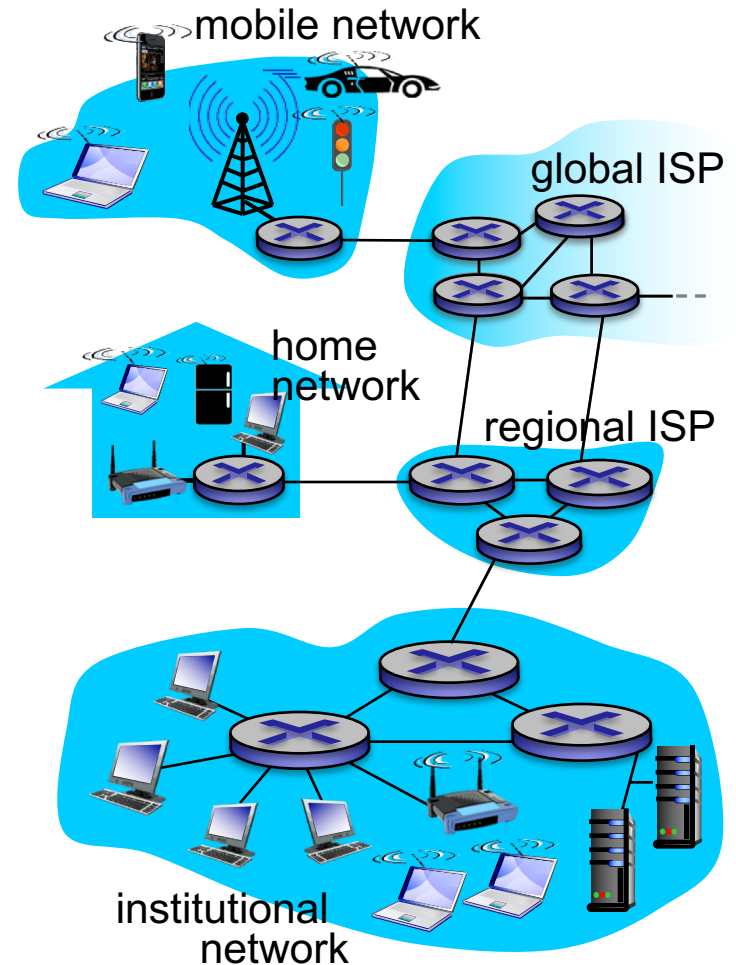
1.5 protocol layers, service models

1.6 networks under attack: security

1.7 history

# A closer look at network structure:

- *network edge:*
  - hosts: clients and servers
  - servers often in data centers
- *access networks, physical media:* wired, wireless communication links
- *network core:*
  - interconnected routers
  - network of networks



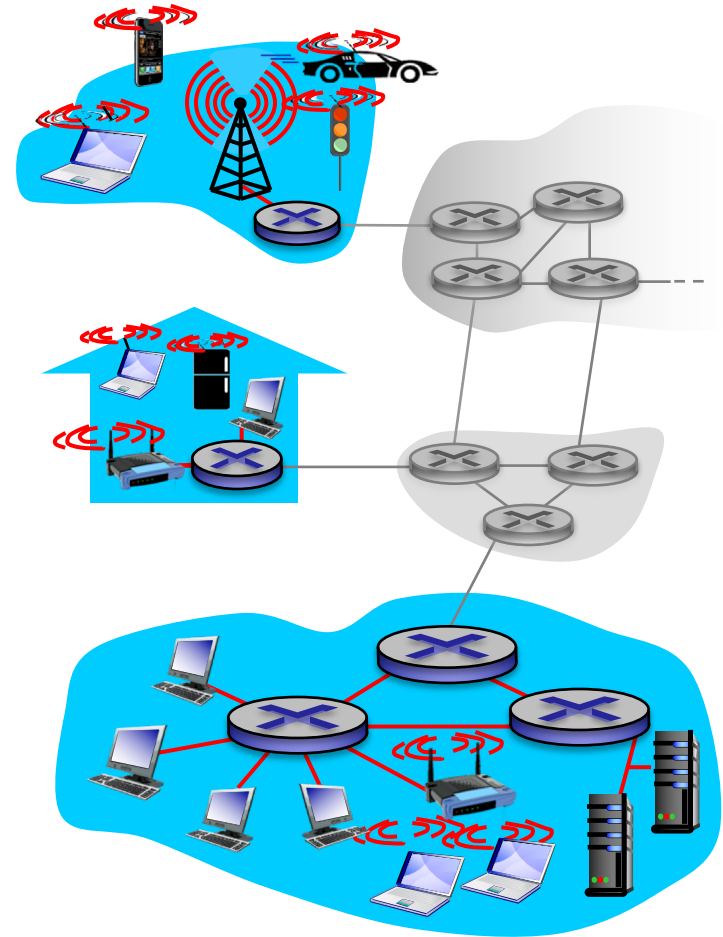
# Access networks and physical media

*Q: How to connect end systems to edge router?*

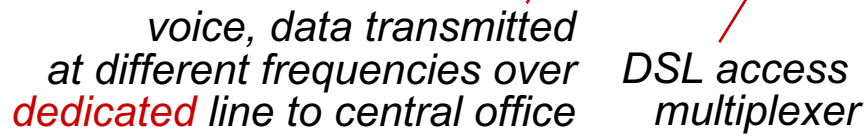
- residential access nets
- institutional access networks (school, company)
- mobile access networks

*keep in mind:*

- bandwidth (bits per second) of access network?
- shared or dedicated?



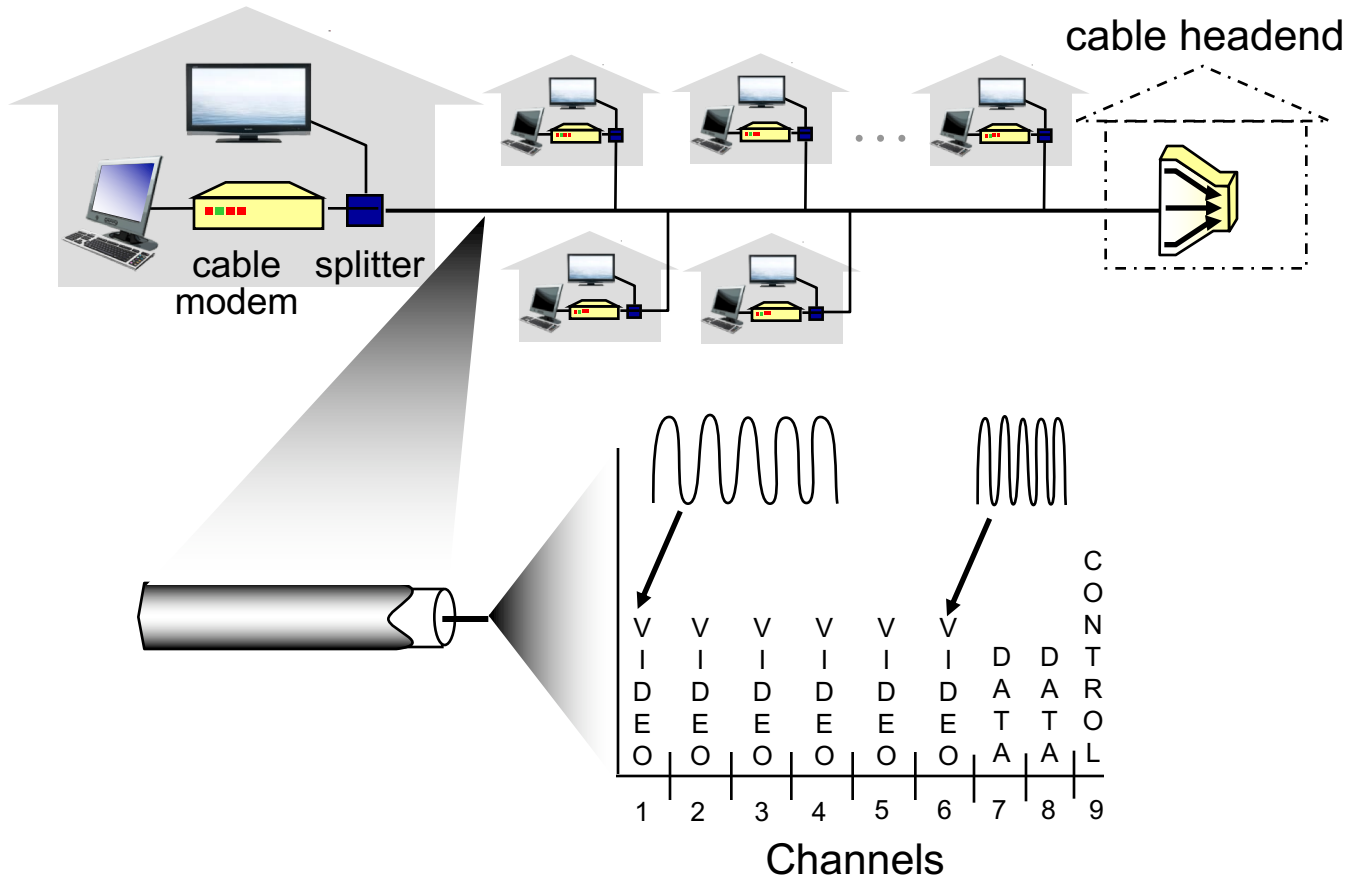
---



- use *existing* telephone line to central office DSLAM
  - data over DSL phone line goes to Internet
  - voice over DSL phone line goes to telephone net
- < 2.5 Mbps upstream transmission rate (typically < 1 Mbps)
- < 24 Mbps downstream transmission rate (typically < 10 Mbps)

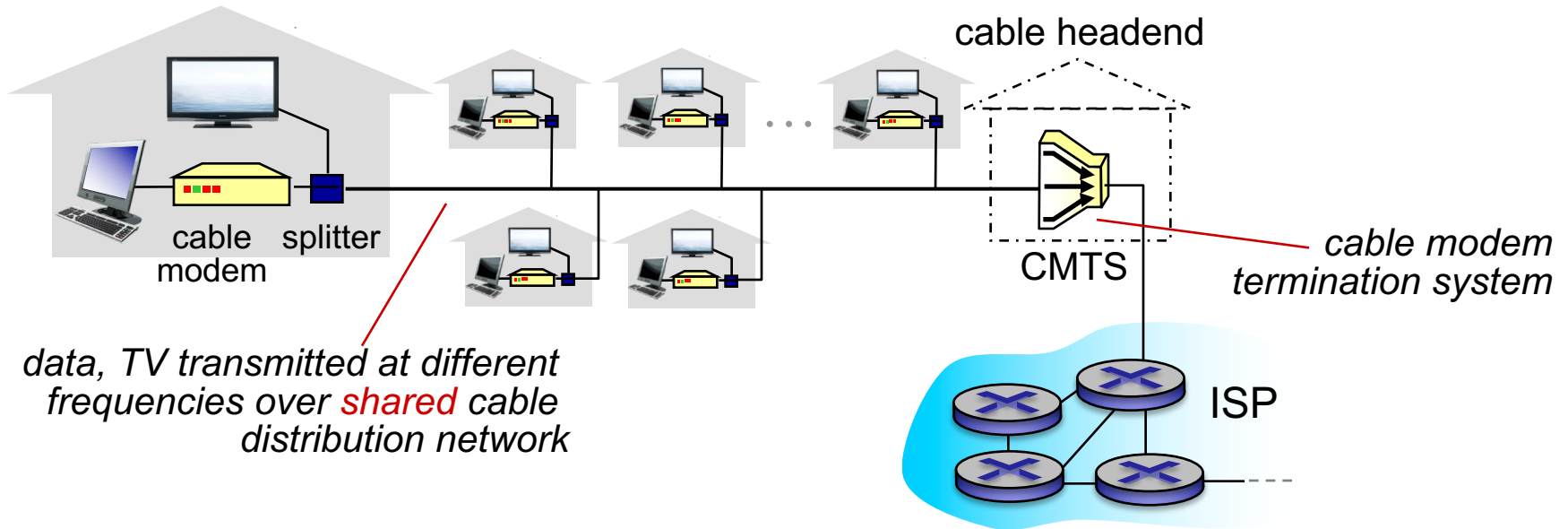


# Access network: cable network



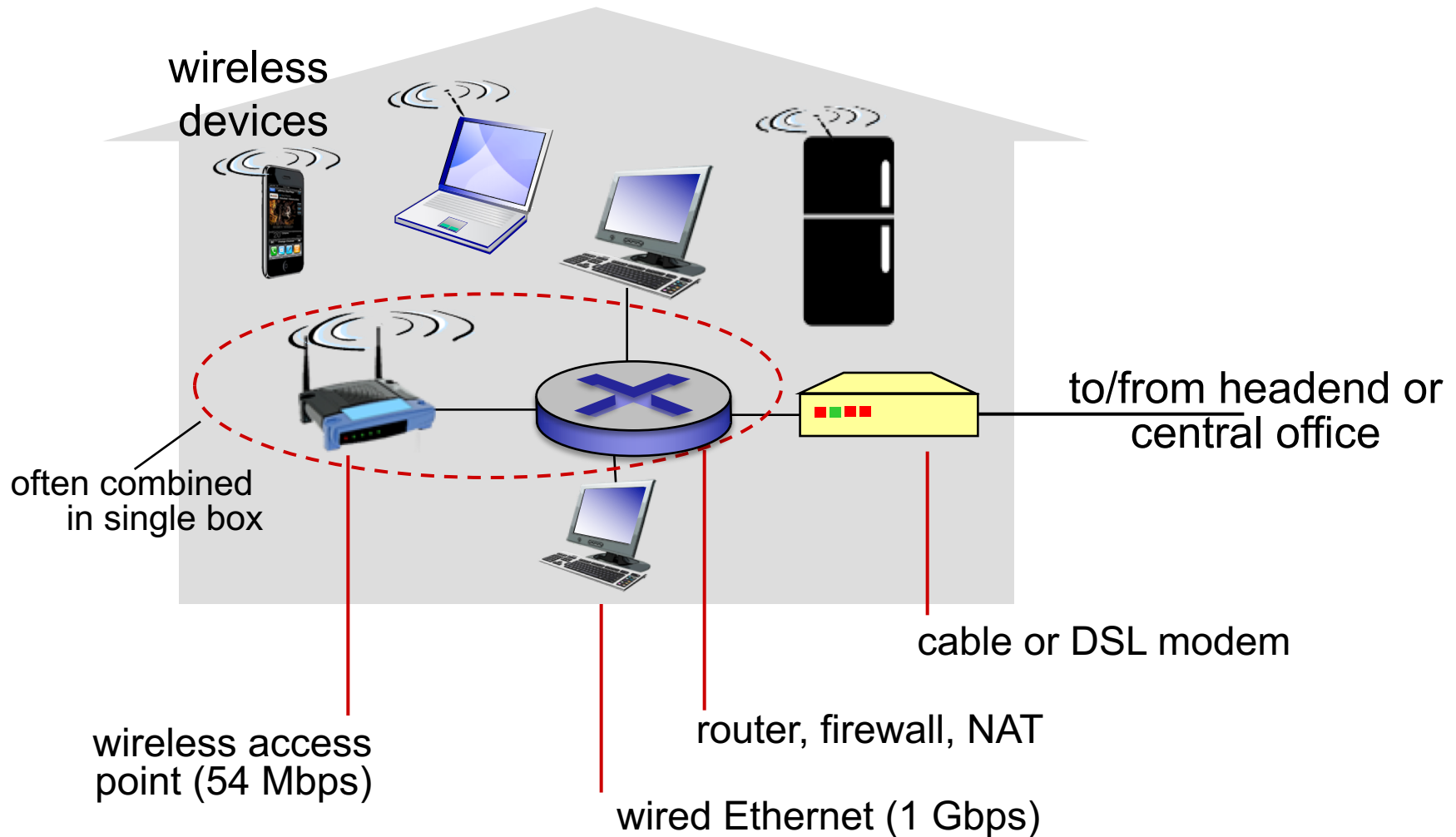
*frequency division multiplexing*: different channels transmitted in different frequency bands

# Access network: cable network

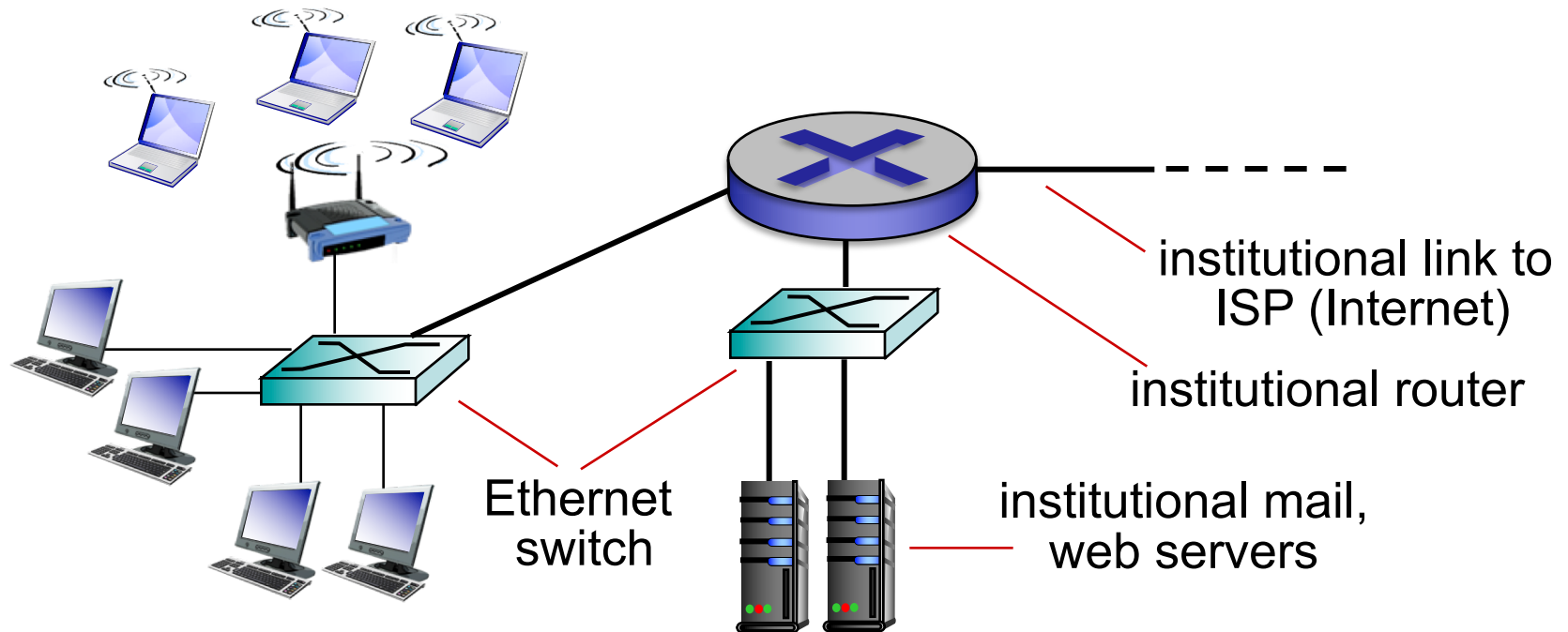


- **HFC: hybrid fiber coax**
  - asymmetric: up to 30Mbps downstream transmission rate, 2 Mbps upstream transmission rate
- **network** of cable, fiber attaches homes to ISP router
  - homes *share access network* to cable headend
  - unlike DSL, which has dedicated access to central office

# Access network: home network



# Enterprise access networks (Ethernet)



- typically used in companies, universities, etc.
- 10 Mbps, 100Mbps, 1Gbps, 10Gbps transmission rates
- today, end systems typically connect into Ethernet switch

# Wireless access networks

- ❖ shared *wireless* access network connects end system to router
  - via base station aka “access point”

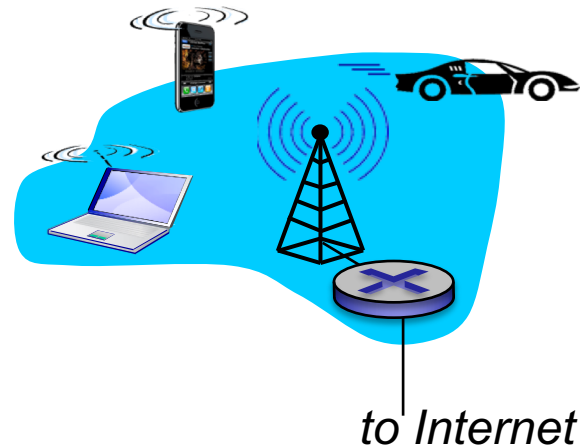
## *wireless LANs:*

- within building (100 ft.)
- 802.11b/g/n (WiFi): 11, 54, 450 Mbps transmission rate



## *wide-area wireless access*

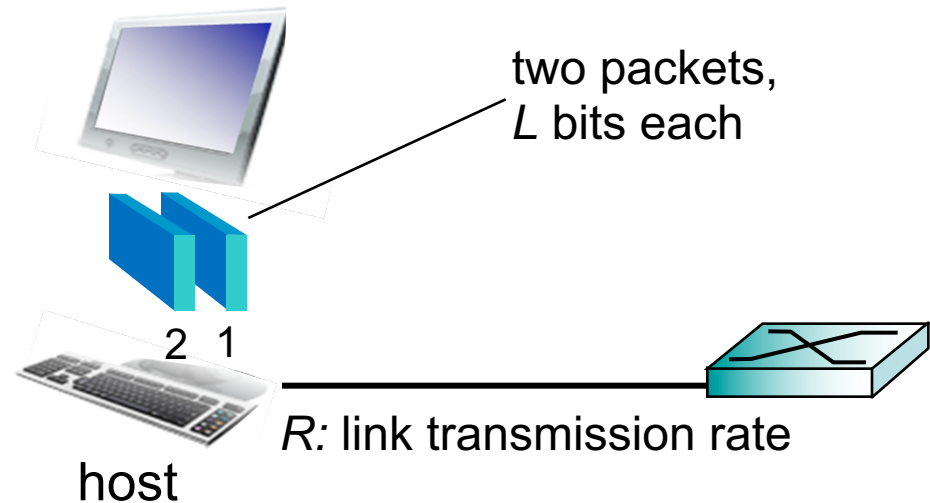
- provided by telco (cellular) operator, 10's km
- between 1 and 300 Mbps
- 3G, 4G: LTE



# Host: sends *packets* of data

host sending function:

- takes application message
- breaks into smaller chunks, known as *packets*, of length  $L$  bits
- transmits packet into access network at *transmission rate  $R$* 
  - link transmission rate, aka link *capacity*, aka *link bandwidth*



$$\text{packet transmission delay} = \text{time needed to transmit } L\text{-bit packet into link} = \frac{L \text{ (bits)}}{R \text{ (bits/sec)}}$$

# Physical media

- ❖ **bit:** propagates between transmitter/receiver pairs
- ❖ **physical link:** what lies between transmitter & receiver
- ❖ **guided media:**
  - signals propagate in solid media: copper, fiber, coax
- ❖ **unguided media:**
  - signals propagate freely, e.g., radio

## *twisted pair (TP)*

- two insulated copper wires
  - Category 5: 100 Mbps, 1 Gbps Ethernet
  - Category 6: 10Gbps



# Physical media: coax, fiber

## *coaxial cable:*

- two concentric copper conductors
- bidirectional
- broadband:
  - multiple channels on cable
  - HFC



## *fiber optic cable:*

- glass fiber carrying light pulses, each pulse a bit
- high-speed operation:
  - high-speed point-to-point transmission (e.g., 10' s-100' s Gbps transmission rate)
- low error rate:
  - repeaters spaced far apart
  - immune to electromagnetic noise





# Physical media: radio

- ❖ signal carried in electromagnetic spectrum
- ❖ no physical “wire”
- ❖ bidirectional
- ❖ propagation environment effects:
  - reflection
  - obstruction by objects
  - interference

## *radio link types:*

- **terrestrial microwave**
  - e.g. up to 45 Mbps channels
- **LAN** (e.g., WiFi)
  - 54 Mbps
- **wide-area** (e.g., cellular)
  - 4G cellular: ~ 10 Mbps
- **satellite**
  - Kbps to 45Mbps channel (or multiple smaller channels)
  - 270 msec end-end delay
  - geosynchronous versus low altitude

# Chapter 1: roadmap

1.1 what is the Internet?

1.2 network edge

- end systems, access networks, links

1.3 network core

- packet switching, circuit switching, network structure

1.4 delay, loss, throughput in networks

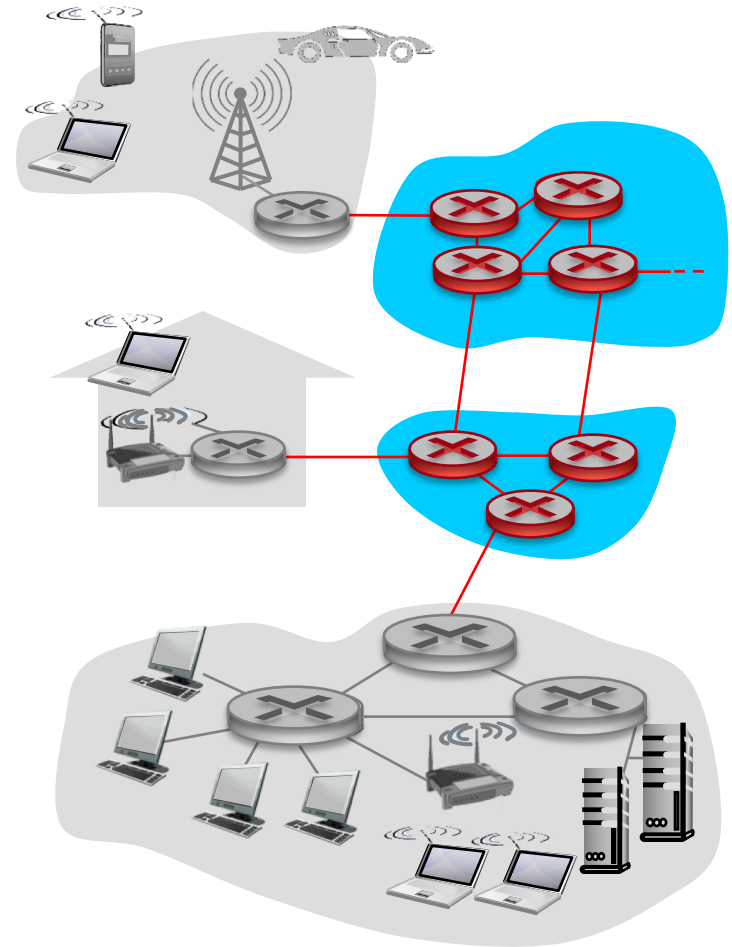
1.5 protocol layers, service models

1.6 networks under attack: security

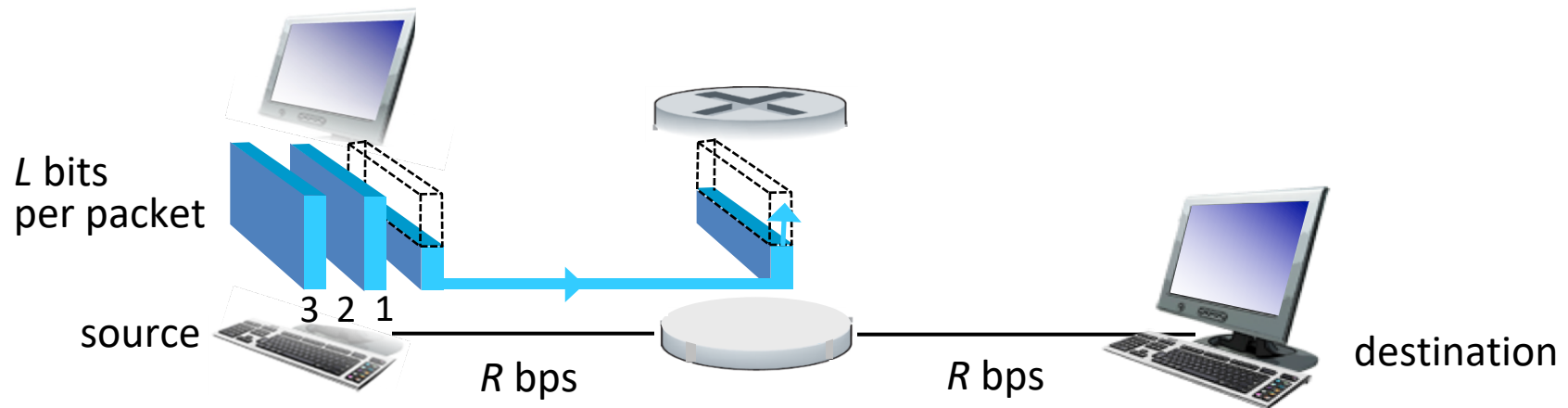
1.7 history

# The network core

- ❖ mesh of interconnected routers
- ❖ packet-switching: hosts break application-layer messages into *packets*
  - forward packets from one router to the next, across links on path from source to destination
  - each packet transmitted at full link capacity



# Packet-switching: store-and-forward



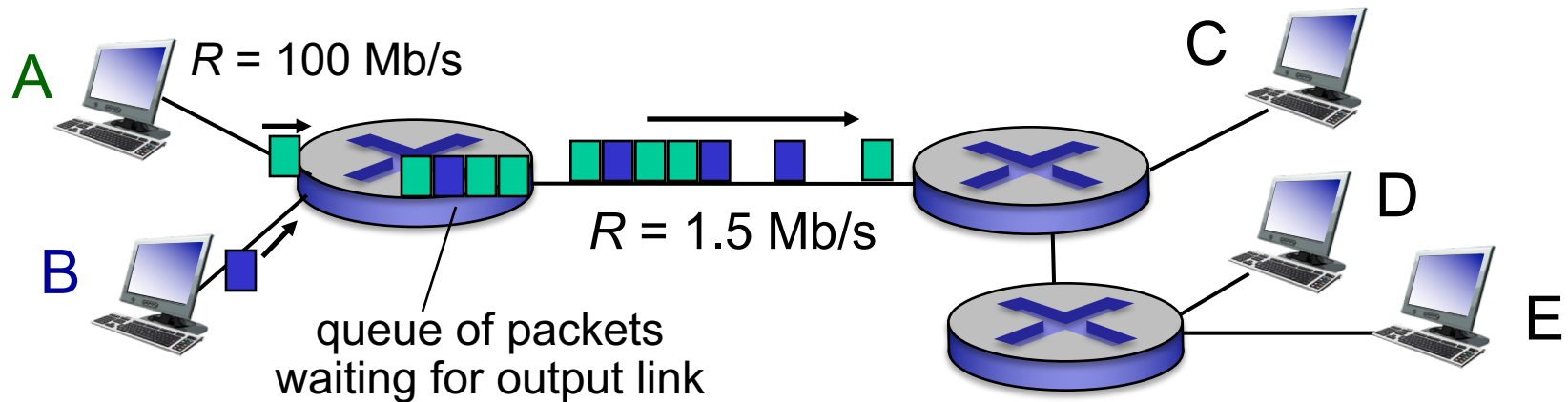
- ❖ takes  $L/R$  seconds to transmit (push out)  $L$ -bit packet into link at  $R$  bps
- ❖ *store and forward*: entire packet must arrive at router before it can be transmitted on next link
- end-end delay =  $2L/R$  (assuming zero propagation delay)

*one-hop numerical example:*

- ❖  $L = 7.5$  Mbits
- ❖  $R = 1.5$  Mbps
- ❖ one-hop transmission delay = 5 sec

} more on delay shortly ...

# Packet Switching: queueing delay, loss



## queuing and loss:

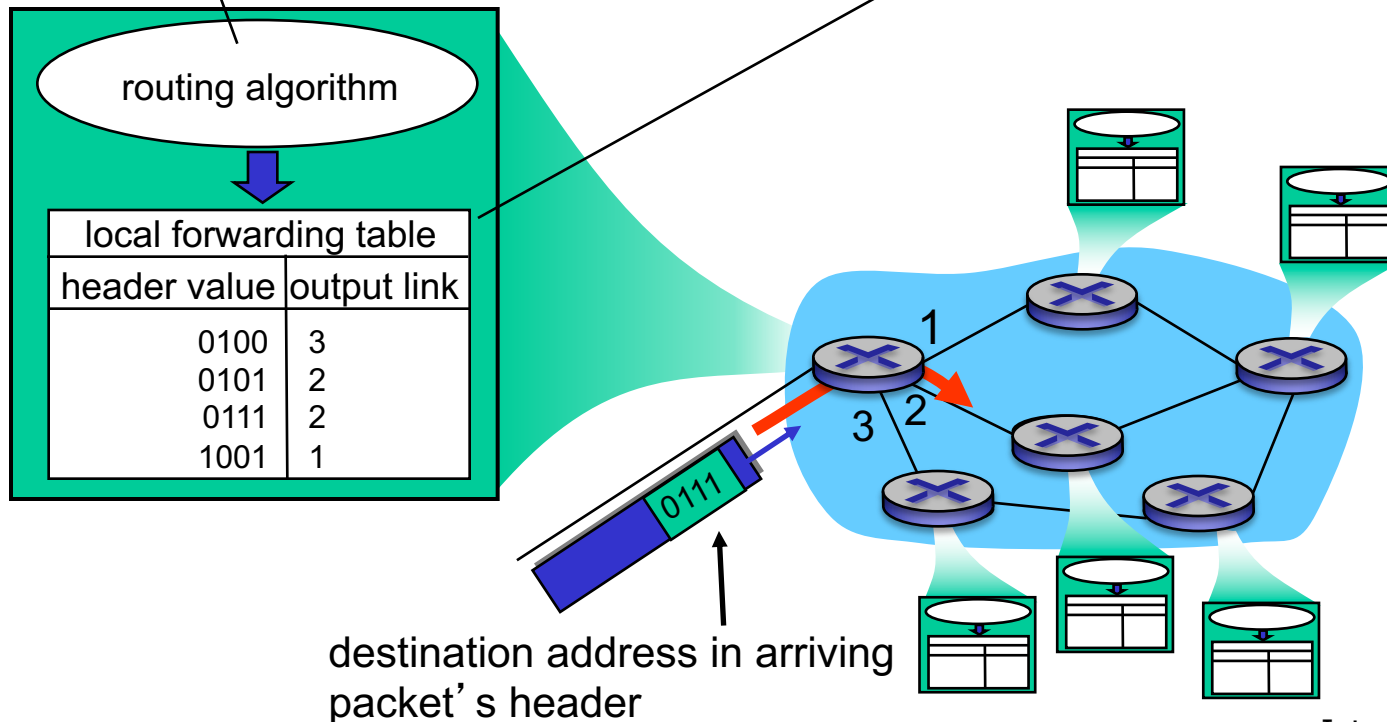
- if arrival rate (in bits) to link exceeds transmission rate of link for a period of time:
  - packets will queue, wait to be transmitted on link
  - packets can be dropped (lost) if memory (buffer) fills up

# Two key network-core functions

**routing:** determines source-destination route taken by packets

- *routing algorithms*

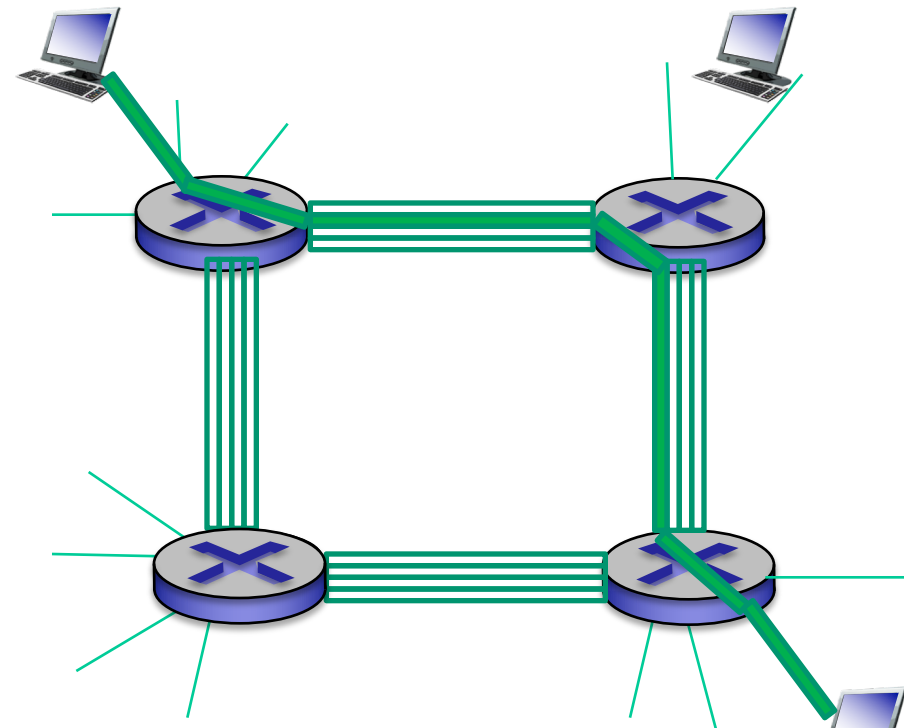
**forwarding:** move packets from router's input to appropriate router output



# Alternative core: circuit switching

end-end resources allocated to, reserved for “call” between source & dest:

- in diagram, each link has four circuits.
  - call gets 2<sup>nd</sup> circuit in top link and 1<sup>st</sup> circuit in right link.
- dedicated resources: no sharing
  - circuit-like (guaranteed) performance
- circuit segment idle if not used by call (*no sharing*)
- commonly used in traditional telephone networks

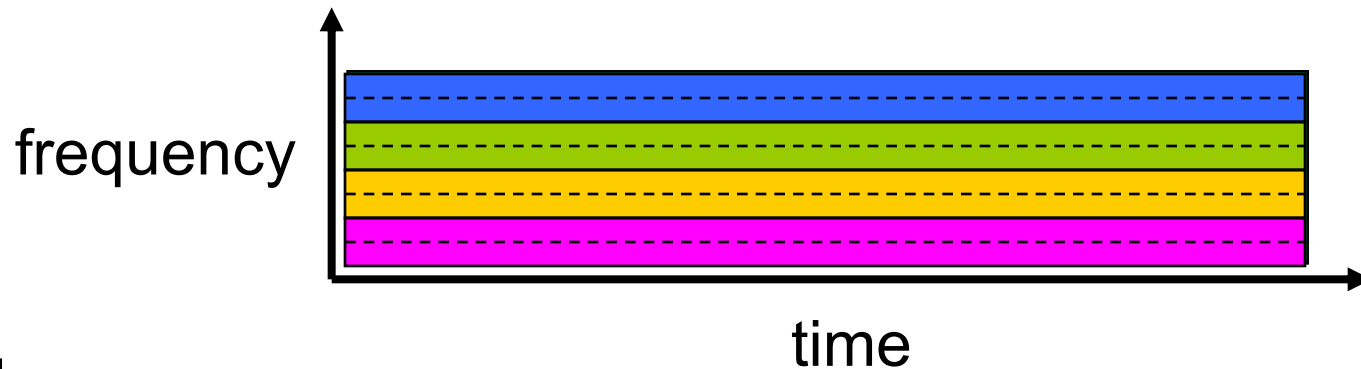


# Circuit switching: FDM versus TDM

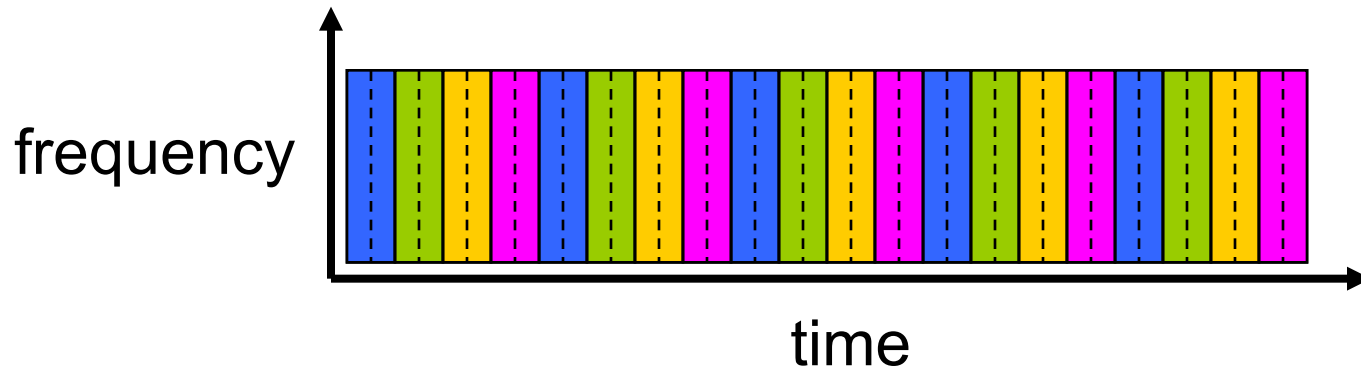
FDM

Example:

4 users



TDM





# Packet switching versus circuit switching

*packet switching allows more users to use network!*

example:

❖ 1 Mb/s link

❖ each user:

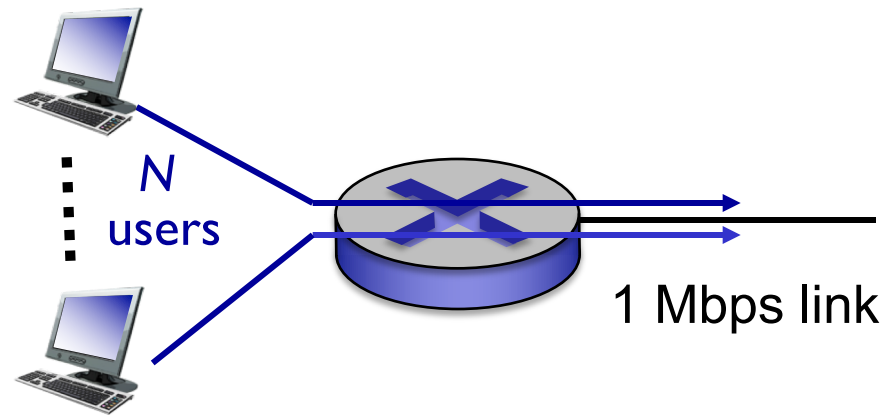
- 100 kb/s when “active”
- active 10% of time

❖ *circuit-switching:*

- 10 users

❖ *packet switching:*

- with 35 users, probability > 10 active at same time is less than .0004 \*



*Q:* how did we get value 0.0004?

*Q:* what happens if > 35 users ?

\* Check out the online interactive exercises for more examples: [http://gaia.cs.umass.edu/kurose\\_ross/interactive/](http://gaia.cs.umass.edu/kurose_ross/interactive/)

# Packet switching versus circuit switching

is packet switching a “slam dunk winner?”

- ❖ great for bursty data
  - resource sharing
  - simpler, no call setup
- ❖ **excessive congestion possible:** packet delay and loss
  - protocols needed for reliable data transfer, congestion control
- ❖ **Q: How to provide circuit-like behavior?**
  - bandwidth guarantees needed for audio/video apps
  - still an unsolved problem (chapter 7)

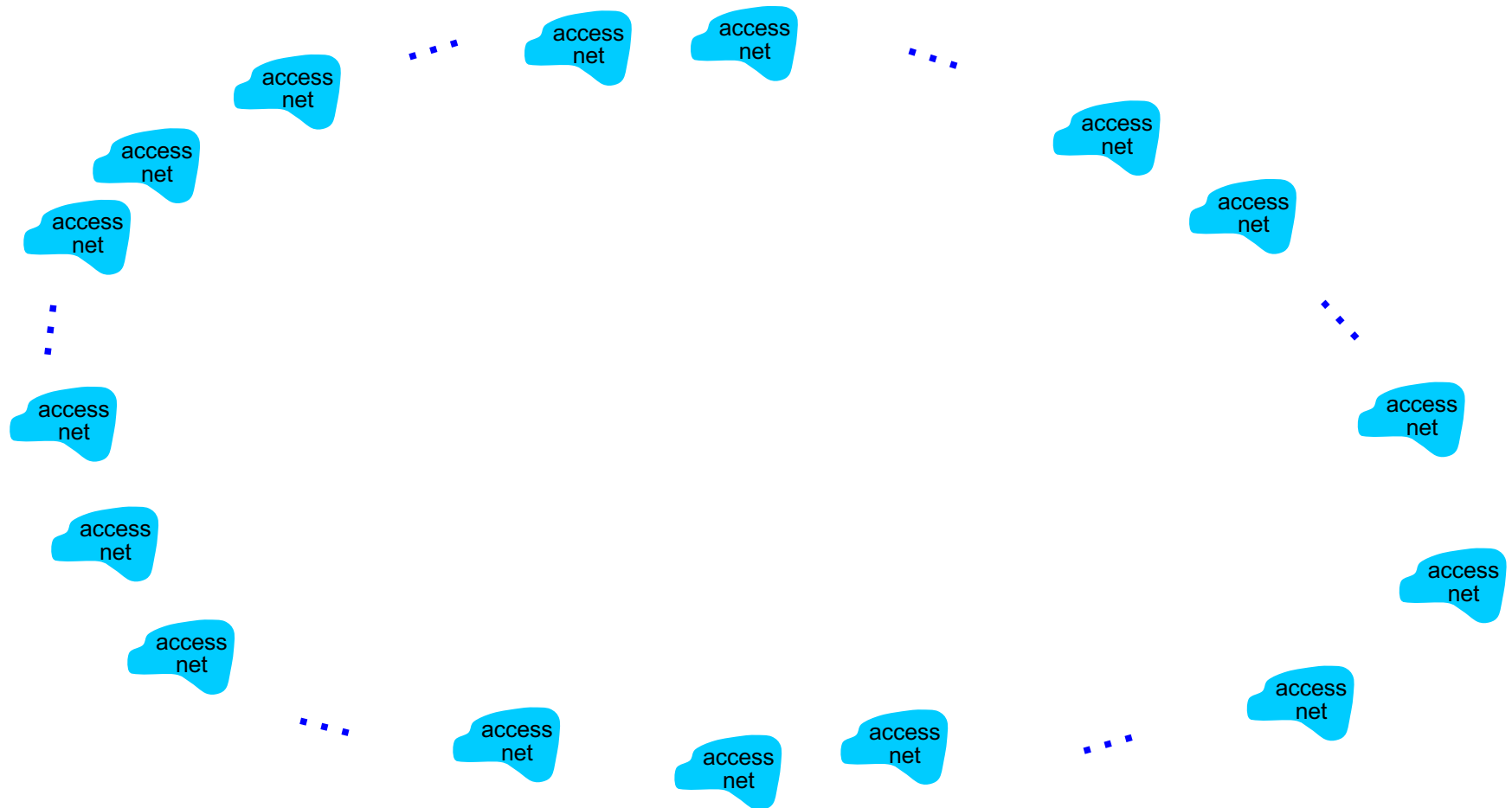
**Q:** human analogies of reserved resources (circuit switching) versus on-demand allocation (packet-switching)?

# Internet structure: network of networks

- End systems connect to Internet via **access ISPs** (Internet Service Providers)
  - residential, company and university ISPs
- Access ISPs in turn must be interconnected.
  - so that any two hosts can send packets to each other
- Resulting network of networks is very complex
  - evolution was driven by **economics** and **national policies**
- Let's take a stepwise approach to describe current Internet structure

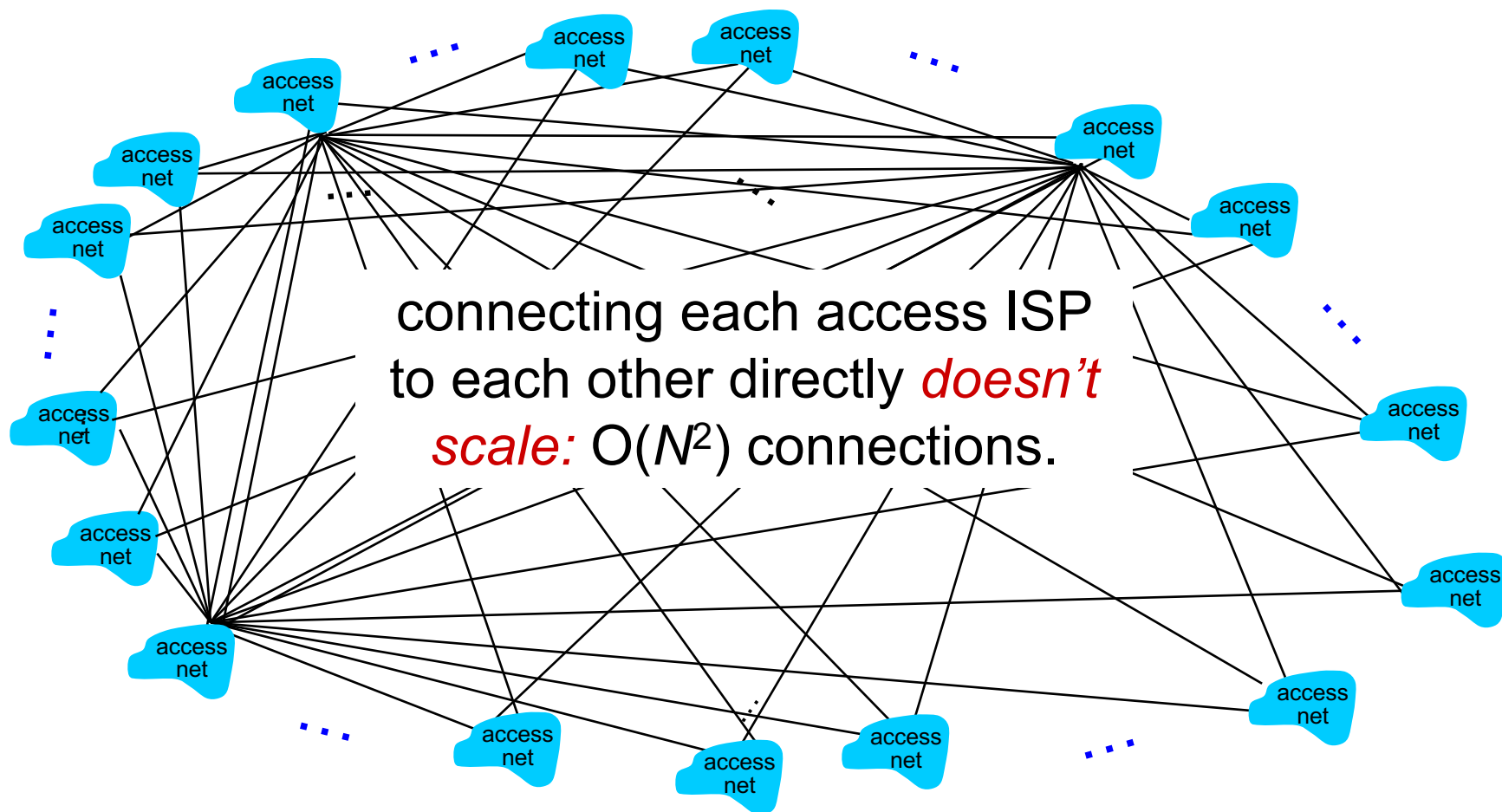
# Internet structure: network of networks

**Question:** given *millions* of access ISPs, how to connect them together?



# Internet structure: network of networks

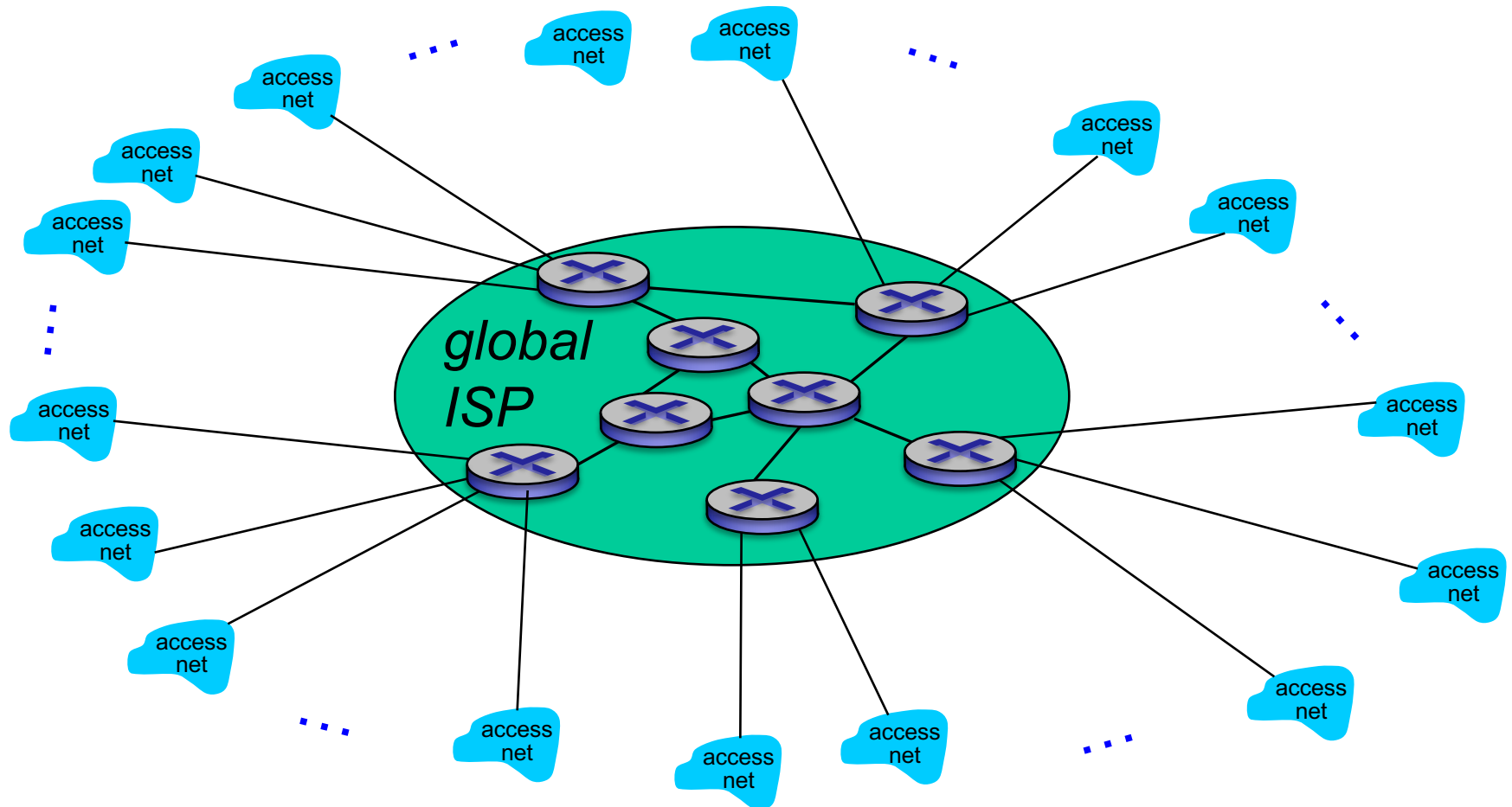
*Option:* connect each access ISP to every other access ISP?



# Internet structure: network of networks

*Option:* connect each access ISP to one global transit ISP?

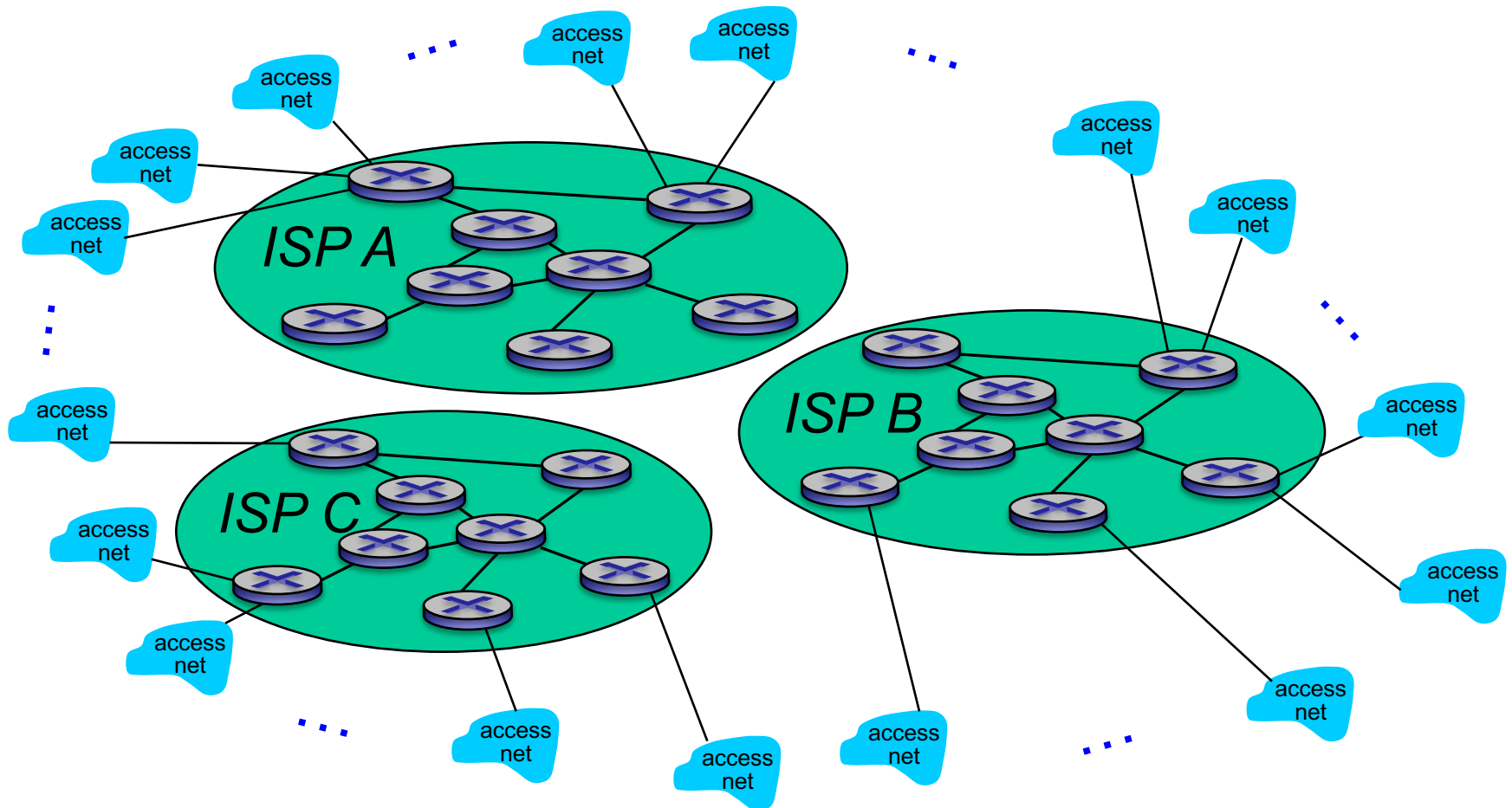
*Customer* and *provider* ISPs have economic agreement.



# Internet structure: network of networks

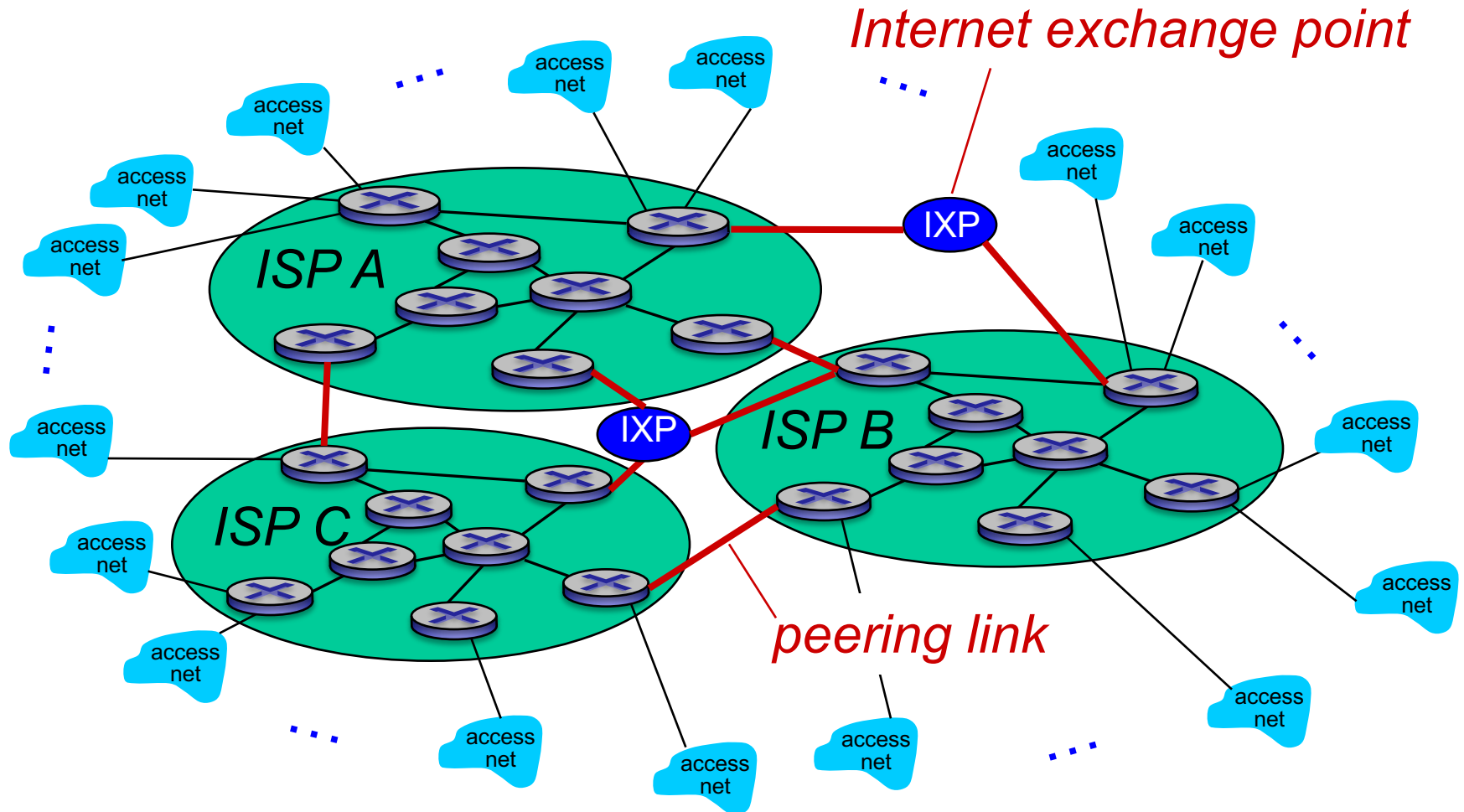
But if one global ISP is viable business, there will be competitors

....



# Internet structure: network of networks

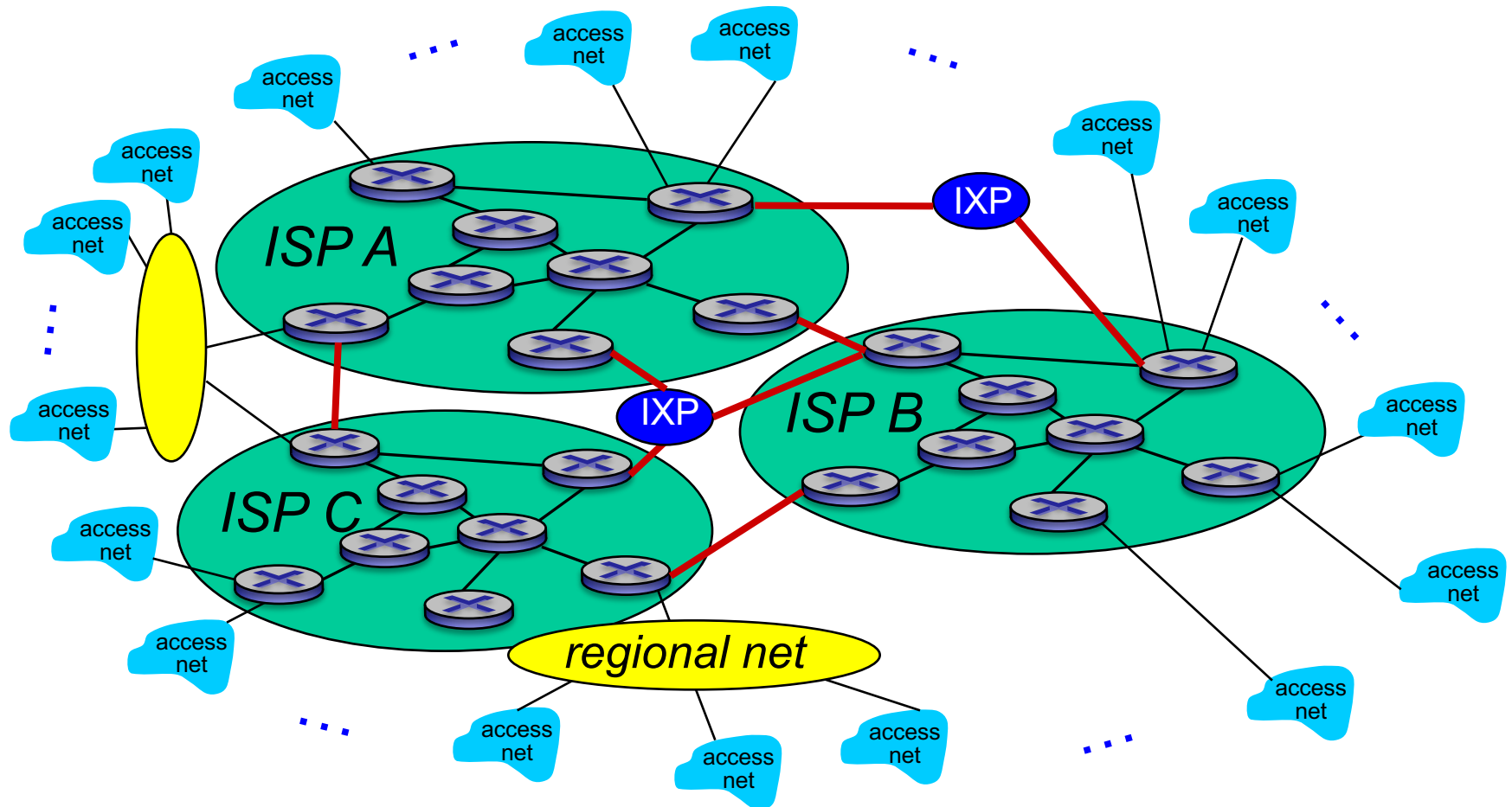
But if one global ISP is viable business, there will be competitors  
.... which must be interconnected





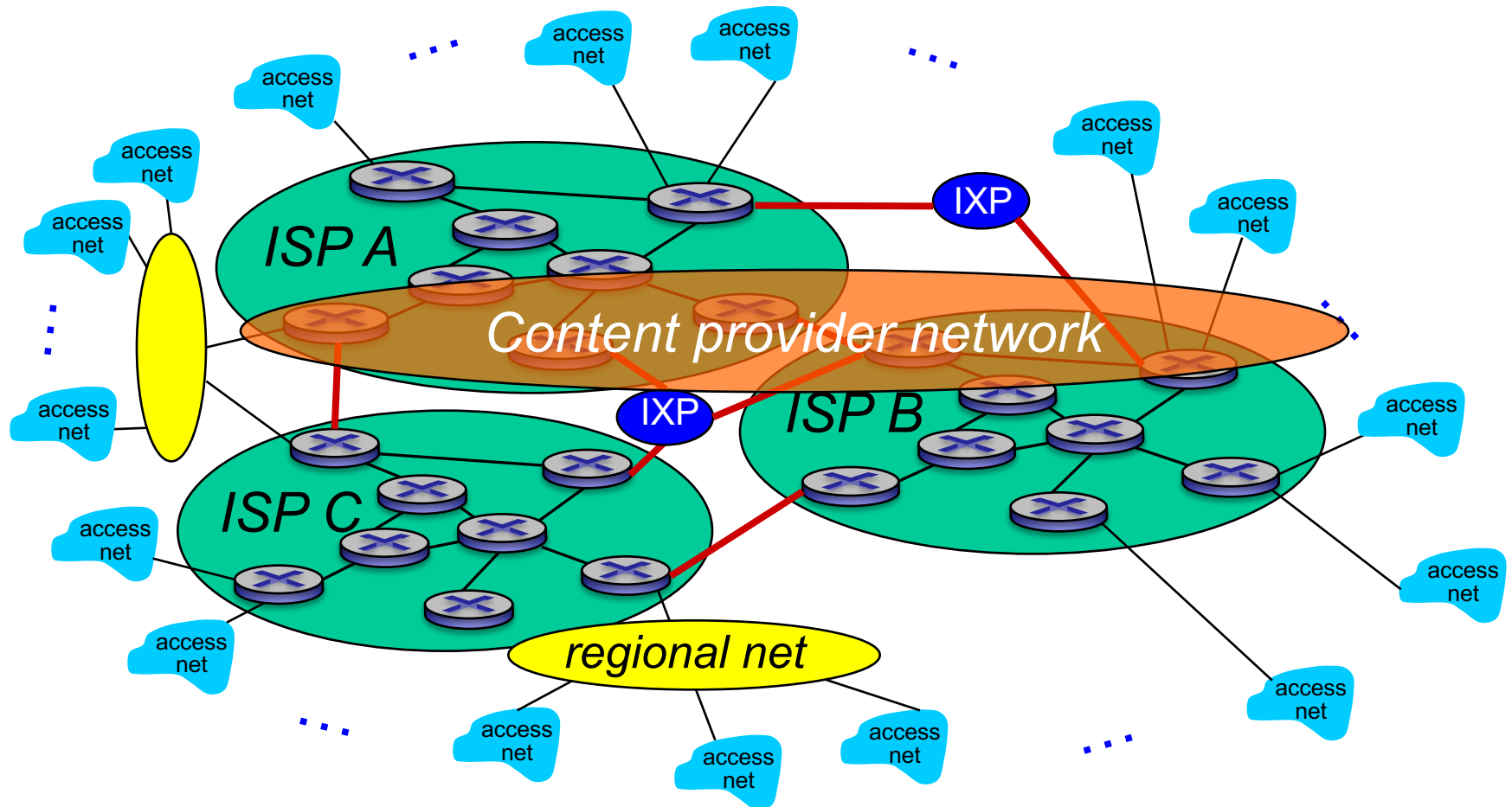
# Internet structure: network of networks

... and regional networks may arise to connect access nets to ISPs

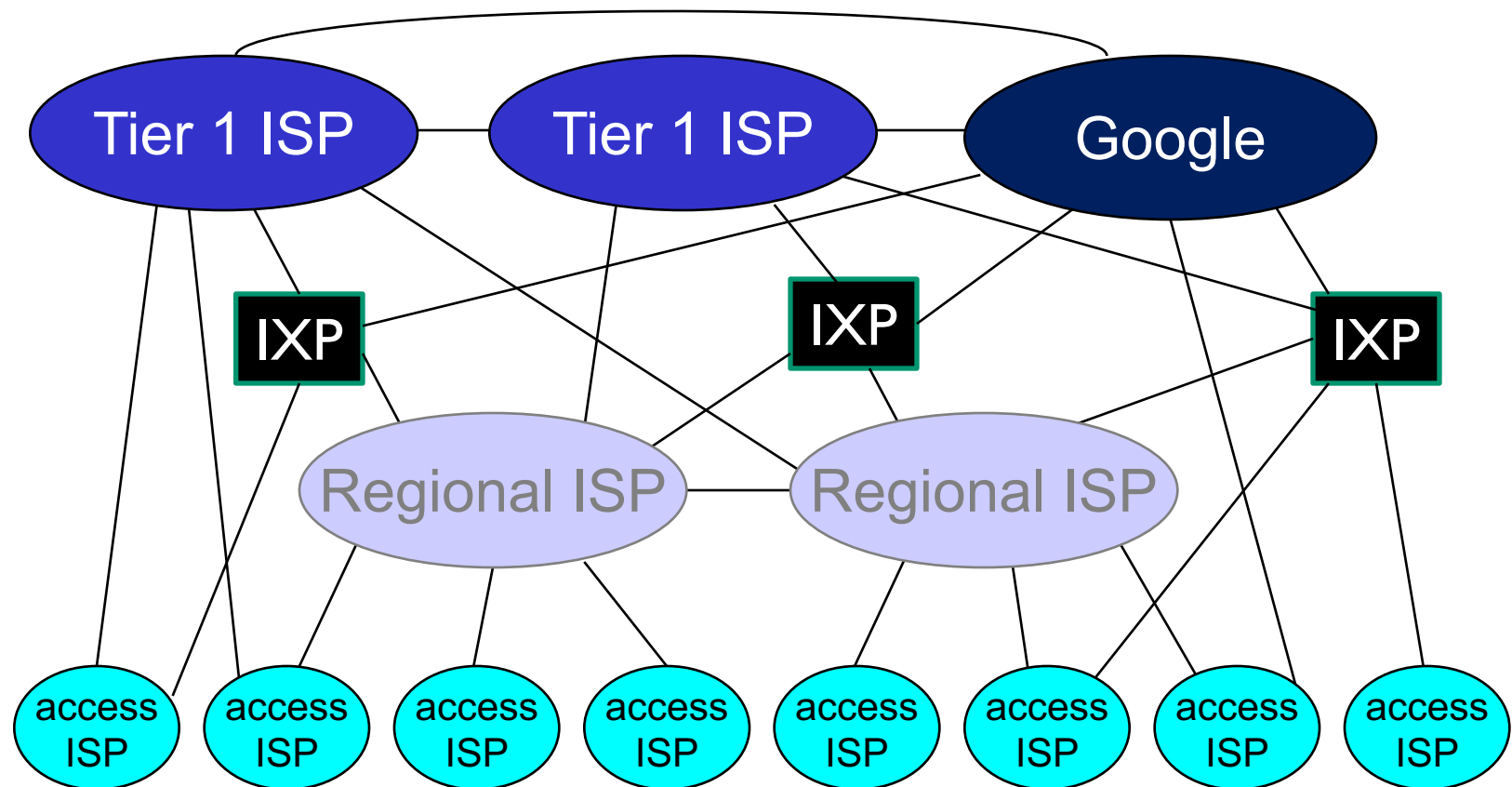


# Internet structure: network of networks

... and content provider networks (e.g., Google, Microsoft, Akamai) may run their own network, to bring services, content close to end users

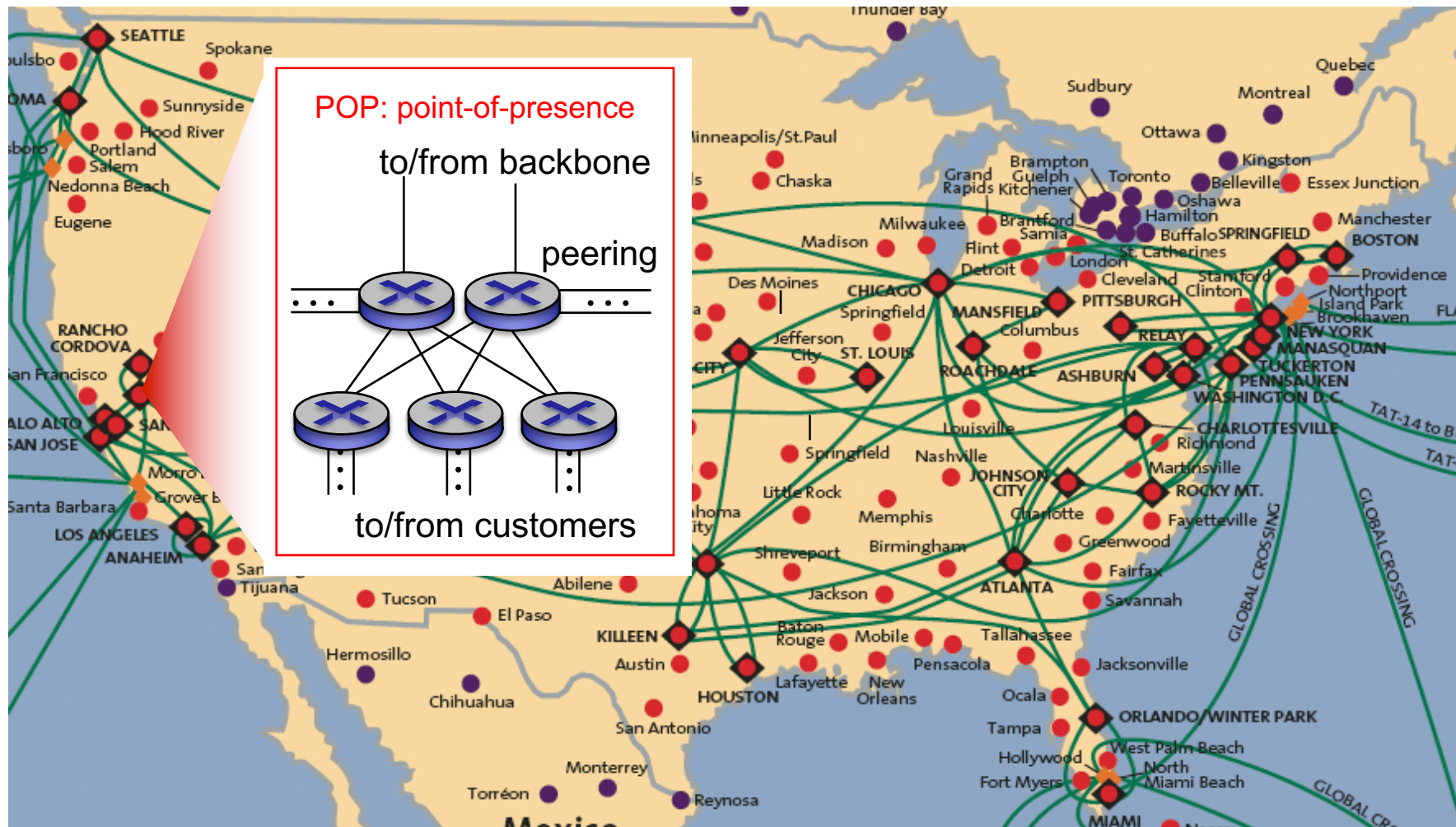


# Internet structure: network of networks



- at center: small # of well-connected large networks
  - “tier-1” commercial ISPs (e.g., Level 3, Sprint, AT&T, NTT), national & international coverage
  - content provider network (e.g., Google): private network that connects its data centers to Internet, often bypassing tier-1, regional ISPs

# Tier-I ISP: e.g., Sprint



# Chapter 1: roadmap

1.1 what is the Internet?

1.2 network edge

- end systems, access networks, links

1.3 network core

- packet switching, circuit switching, network structure

1.4 delay, loss, throughput in networks

1.5 protocol layers, service models

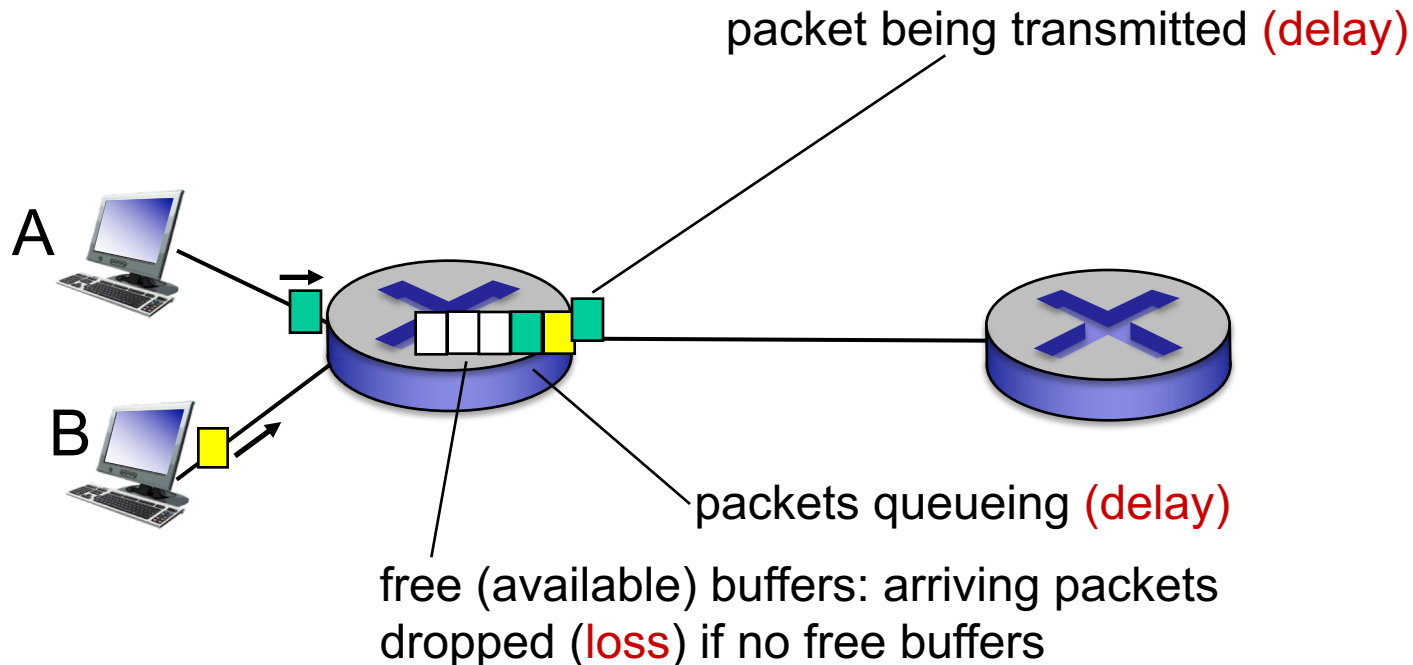
1.6 networks under attack: security

1.7 history

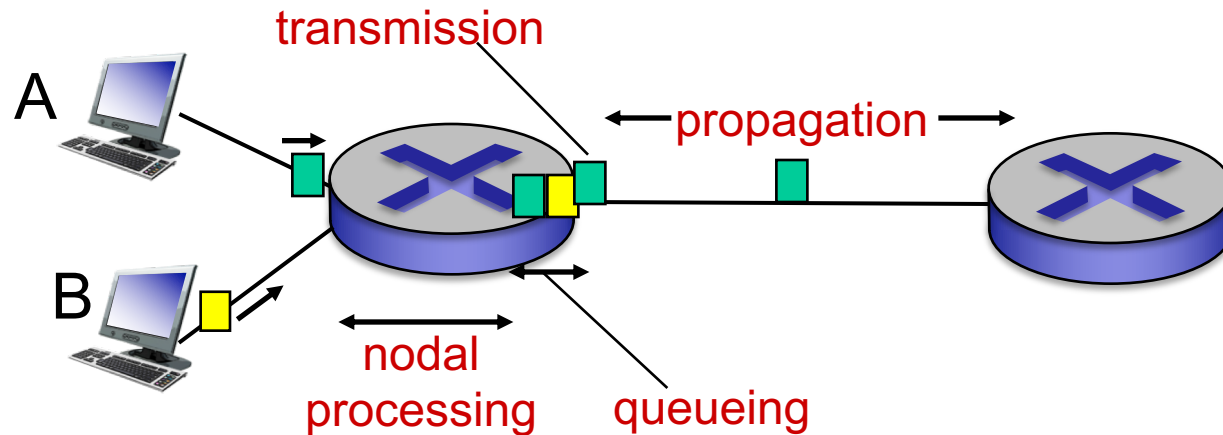
# How do loss and delay occur?

packets *queue* in router buffers

- packet arrival rate to link (temporarily) exceeds output link capacity
- packets queue, wait for turn



# Four sources of packet delay



$$d_{\text{nodal}} = d_{\text{proc}} + d_{\text{queue}} + d_{\text{trans}} + d_{\text{prop}}$$

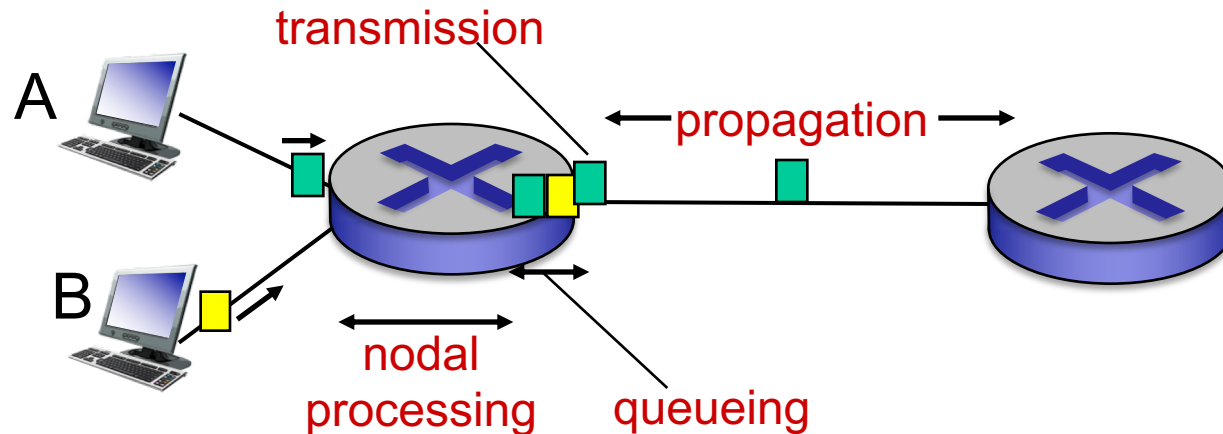
**$d_{\text{proc}}$ : nodal processing**

- ❖ check bit errors
- ❖ determine output link
- ❖ typically < msec

**$d_{\text{queue}}$ : queueing delay**

- time waiting at output link for transmission
- depends on congestion level of router

# Four sources of packet delay



$$d_{\text{nodal}} = d_{\text{proc}} + d_{\text{queue}} + d_{\text{trans}} + d_{\text{prop}}$$

**$d_{\text{trans}}$ : transmission delay:**

- $L$ : packet length (bits)
- $R$ : link bandwidth (bps)

▪  $d_{\text{trans}} = L/R$  ←  $d_{\text{trans}}$  and  $d_{\text{prop}}$  →  
**very different**

**$d_{\text{prop}}$ : propagation delay:**

- $d$ : length of physical link
  - $s$ : propagation speed ( $\sim 2 \times 10^8$  m/sec)
- $d_{\text{prop}} = d/s$

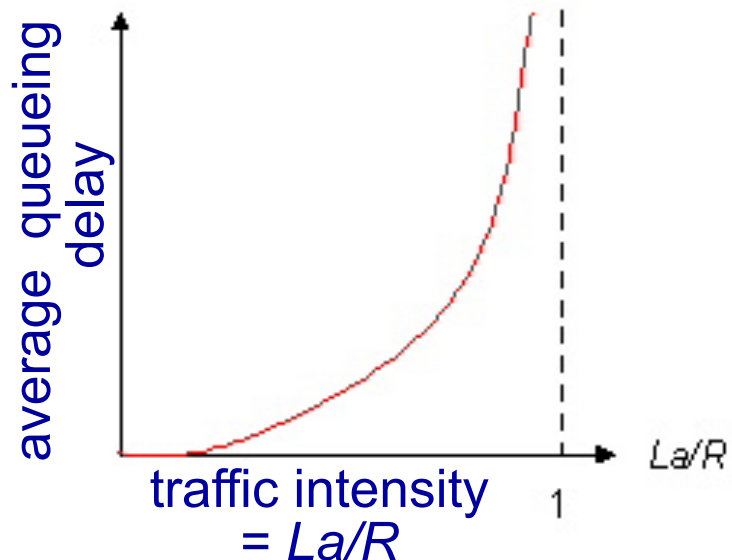
\* Check out the online interactive exercises for more examples: [http://gaia.cs.umass.edu/kurose\\_ross/interactive/](http://gaia.cs.umass.edu/kurose_ross/interactive/)

\* Check out the Java applet for an interactive animation on trans vs. prop delay



# Queueing delay (revisited)

- ❖  $R$ : link bandwidth (bps)
- ❖  $L$ : packet length (bits)
- ❖  $a$ : average packet arrival rate



- $La/R \sim 0$ : avg. queueing delay small
- $La/R \rightarrow 1$ : avg. queueing delay large
- $La/R > 1$ : more “work” arriving than can be serviced, average delay infinite!



$La/R \sim 0$

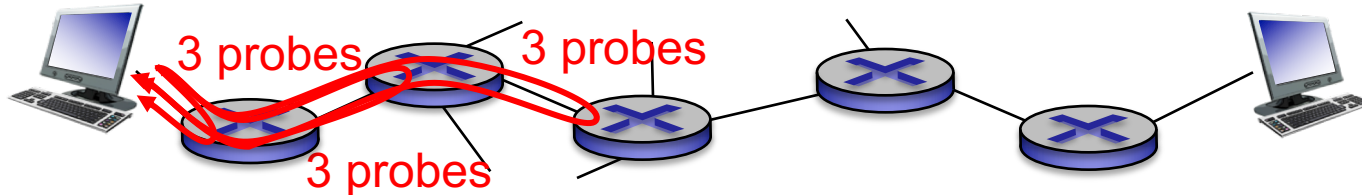


$La/R \rightarrow 1$

\* Check online interactive animation on queueing and loss

# “Real” Internet delays and routes


- ❖ what do “real” Internet delay & loss look like?
- ❖ **traceroute** program: provides delay measurement from source to router along end-end Internet path towards destination. For all  $i$ :
  - sends three packets that will reach router  $i$  on path towards destination
  - router  $i$  will return packets to sender
  - sender times interval between transmission and reply.



# “Real” Internet delays, routes


**traceroute:** gaia.cs.umass.edu to www.eurecom.fr

3 delay measurements from  
gaia.cs.umass.edu to cs-gw.cs.umass.edu



1 cs-gw (128.119.240.254) 1 ms 1 ms 2 ms  
2 border1-rt-fa5-1-0.gw.umass.edu (128.119.3.145) 1 ms 1 ms 2 ms  
3 cht-vbns.gw.umass.edu (128.119.3.130) 6 ms 5 ms 5 ms  
4 jn1-at1-0-0-19.wor.vbns.net (204.147.132.129) 16 ms 11 ms 13 ms  
5 jn1-so7-0-0-0.wae.vbns.net (204.147.136.136) 21 ms 18 ms 18 ms  
6 abilene-vbns.abilene.ucaid.edu (198.32.11.9) 22 ms 18 ms 22 ms  
7 nycm-wash.abilene.ucaid.edu (198.32.8.46) 22 ms 22 ms 22 ms  
8 62.40.103.253 (62.40.103.253) 104 ms 109 ms 106 ms  
9 de2-1.de1.de.geant.net (62.40.96.129) 109 ms 102 ms 104 ms  
10 de.fr1.fr.geant.net (62.40.96.50) 113 ms 121 ms 114 ms  
11 renater-gw.fr1.fr.geant.net (62.40.103.54) 112 ms 114 ms 112 ms  
12 nio-n2.cssi.renater.fr (193.51.206.13) 111 ms 114 ms 116 ms  
13 nice.cssi.renater.fr (195.220.98.102) 123 ms 125 ms 124 ms  
14 r3t2-nice.cssi.renater.fr (195.220.98.110) 126 ms 126 ms 124 ms  
15 eurecom-valbonne.r3t2.ft.net (193.48.50.54) 135 ms 128 ms 133 ms  
16 194.214.211.25 (194.214.211.25) 126 ms 128 ms 126 ms  
17 \* \* \*  
18 \* \* \*  
19 fantasia.eurecom.fr (193.55.113.142) 132 ms 128 ms 136 ms

trans-oceanic link

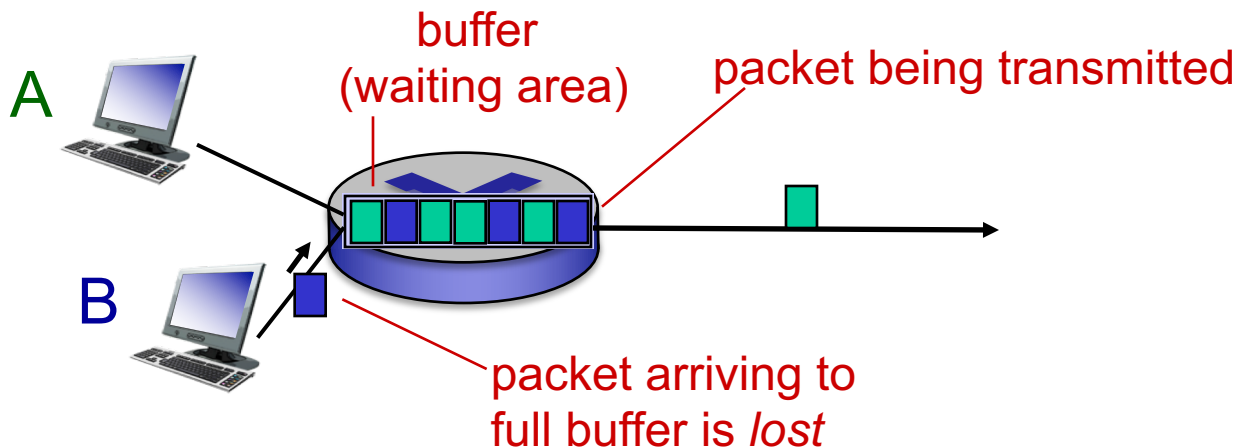


\* means no response (probe lost, router not replying)

\* Do some traceroutes from exotic countries at [www.traceroute.org](http://www.traceroute.org)

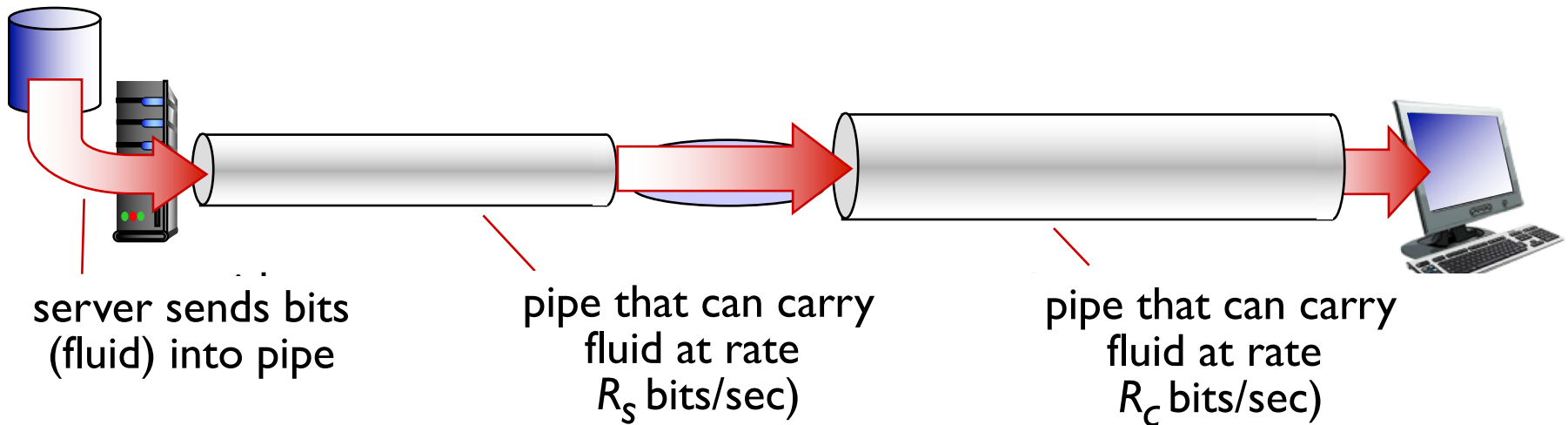
# Packet loss

- ❖ queue (aka buffer) preceding link in buffer has finite capacity
- ❖ packet arriving to full queue dropped (aka lost)
- ❖ lost packet may be retransmitted by previous node, by source end system, or not at all



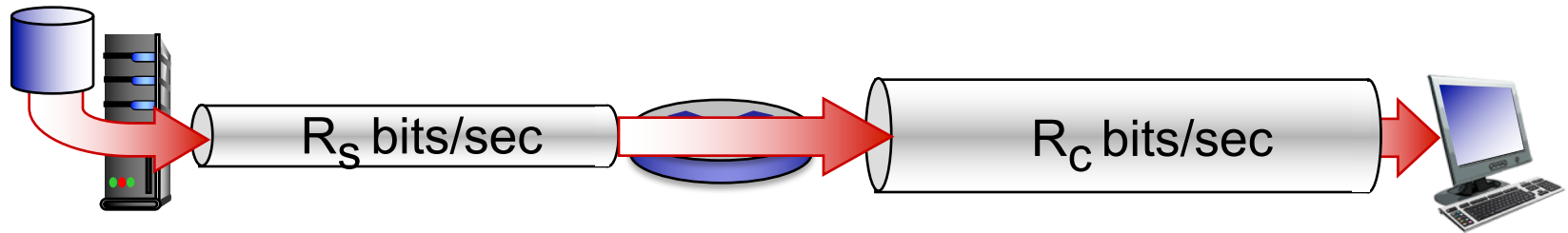
# Throughput

- ❖ *throughput*: rate (bits/time unit) at which bits transferred between sender/receiver
  - *instantaneous*: rate at given point in time
  - *average*: rate over longer period of time

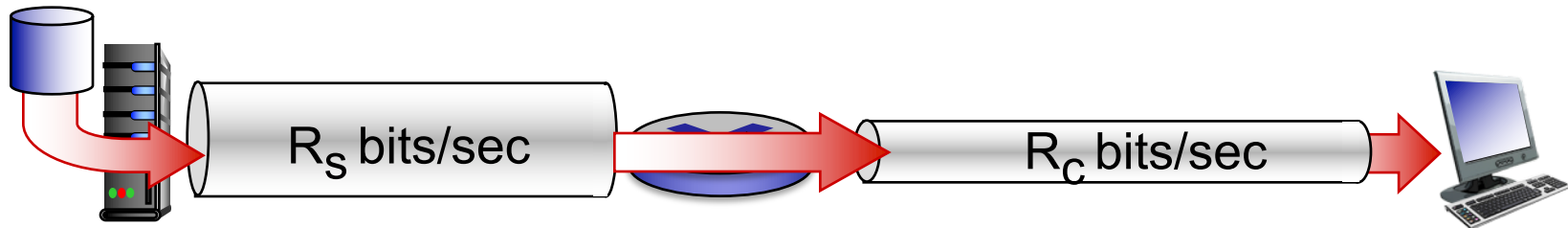


# Throughput (more)

❖  $R_s < R_c$  What is average end-end throughput?



■  $R_s > R_c$  What is average end-end throughput?

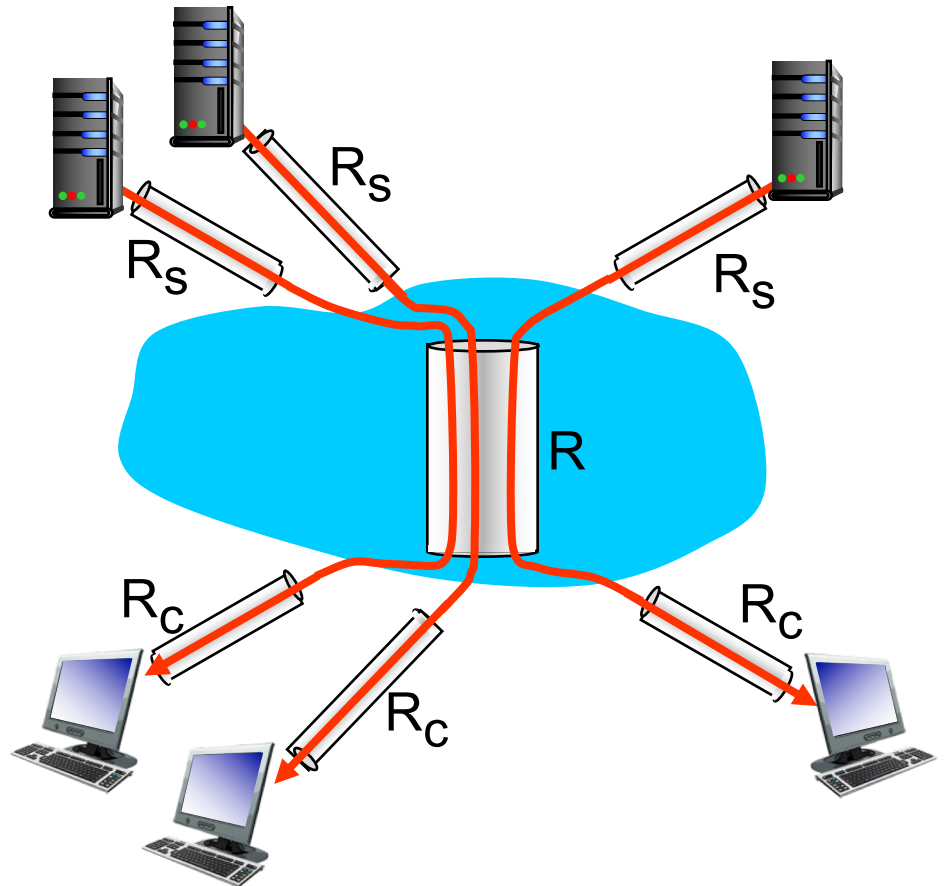


*bottleneck link*

link on end-end path that constrains end-end throughput

# Throughput: Internet scenario

- ❖ per-connection end-end throughput:  
 $\min(R_c, R_s, R/I)$
- ❖ in practice:  $R_c$  or  $R_s$  is often bottleneck



10 connections (fairly) share  
backbone bottleneck link  $R$  bits/sec

# Chapter 1: roadmap

1.1 what is the Internet?

1.2 network edge

- end systems, access networks, links

1.3 network core

- packet switching, circuit switching, network structure

1.4 delay, loss, throughput in networks

1.5 protocol layers, service models

1.6 networks under attack: security

1.7 history



# Protocol “layers”

*Networks are complex,  
with many “pieces”:*

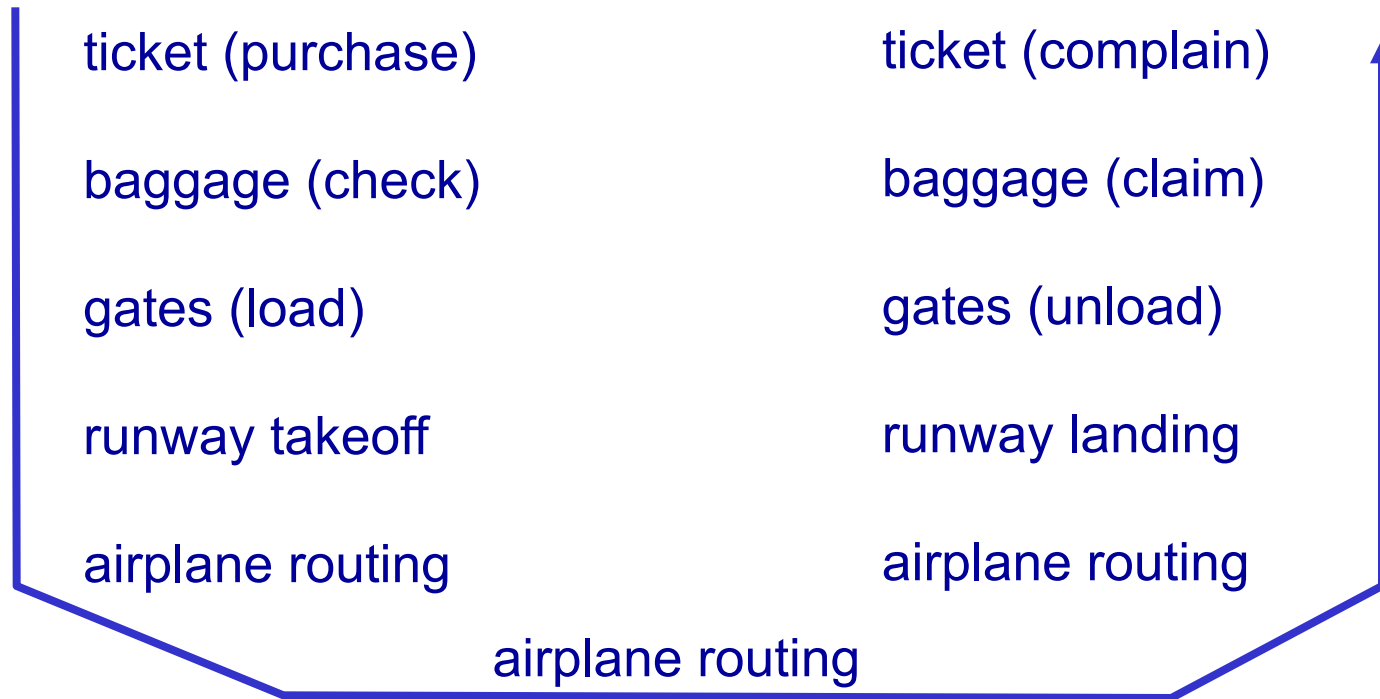
- hosts
- routers
- links of various media
- applications
- protocols
- hardware, software

*Question:*

is there any hope of  
*organizing* structure of  
network?

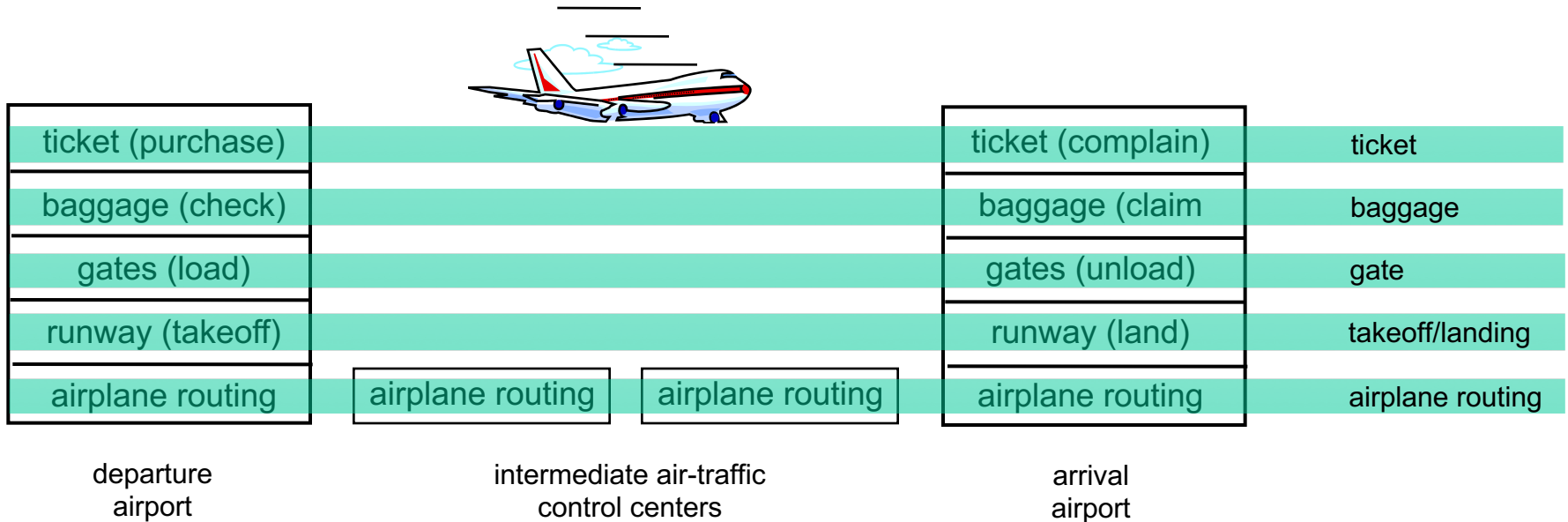
.... or at least our  
discussion of networks?

# Organization of air travel



❖ a series of steps

# Layering of airline functionality



**layers:** each layer implements a service

- via its own internal-layer actions
- relying on services provided by layer below

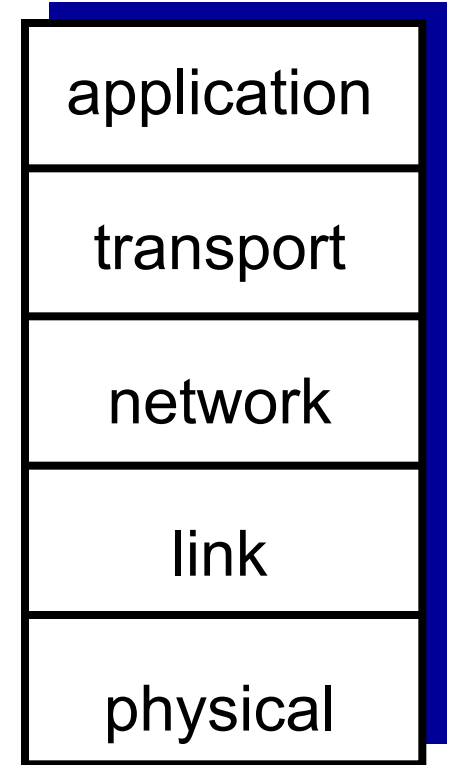
# Why layering?

dealing with complex systems:

- explicit structure allows identification, relationship of complex system's pieces
  - layered *reference model* for discussion
- modularization eases maintenance, updating of system
  - change of implementation of layer's service transparent to rest of system
  - e.g., change in gate procedure doesn't affect rest of system
- layering considered harmful?

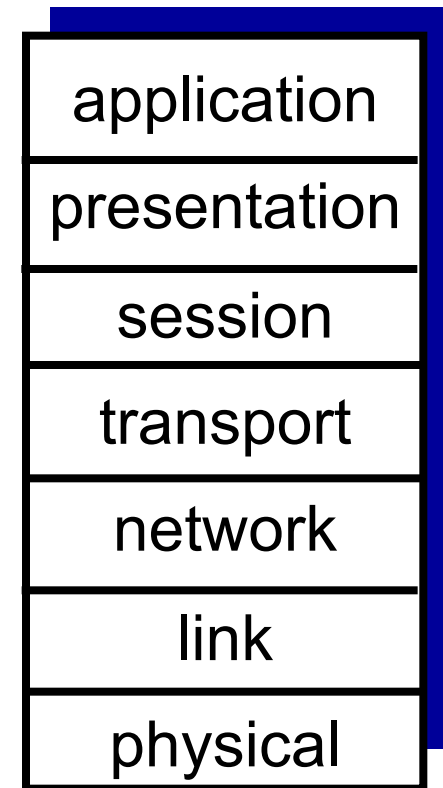
# Internet protocol stack

- *application*: supporting network applications
  - FTP, SMTP, HTTP
- *transport*: process-process data transfer
  - TCP, UDP
- *network*: routing of datagrams from source to destination
  - IP, routing protocols
- *link*: data transfer between neighboring network elements
  - Ethernet, 802.11 (WiFi), PPP
- *physical*: bits “on the wire”

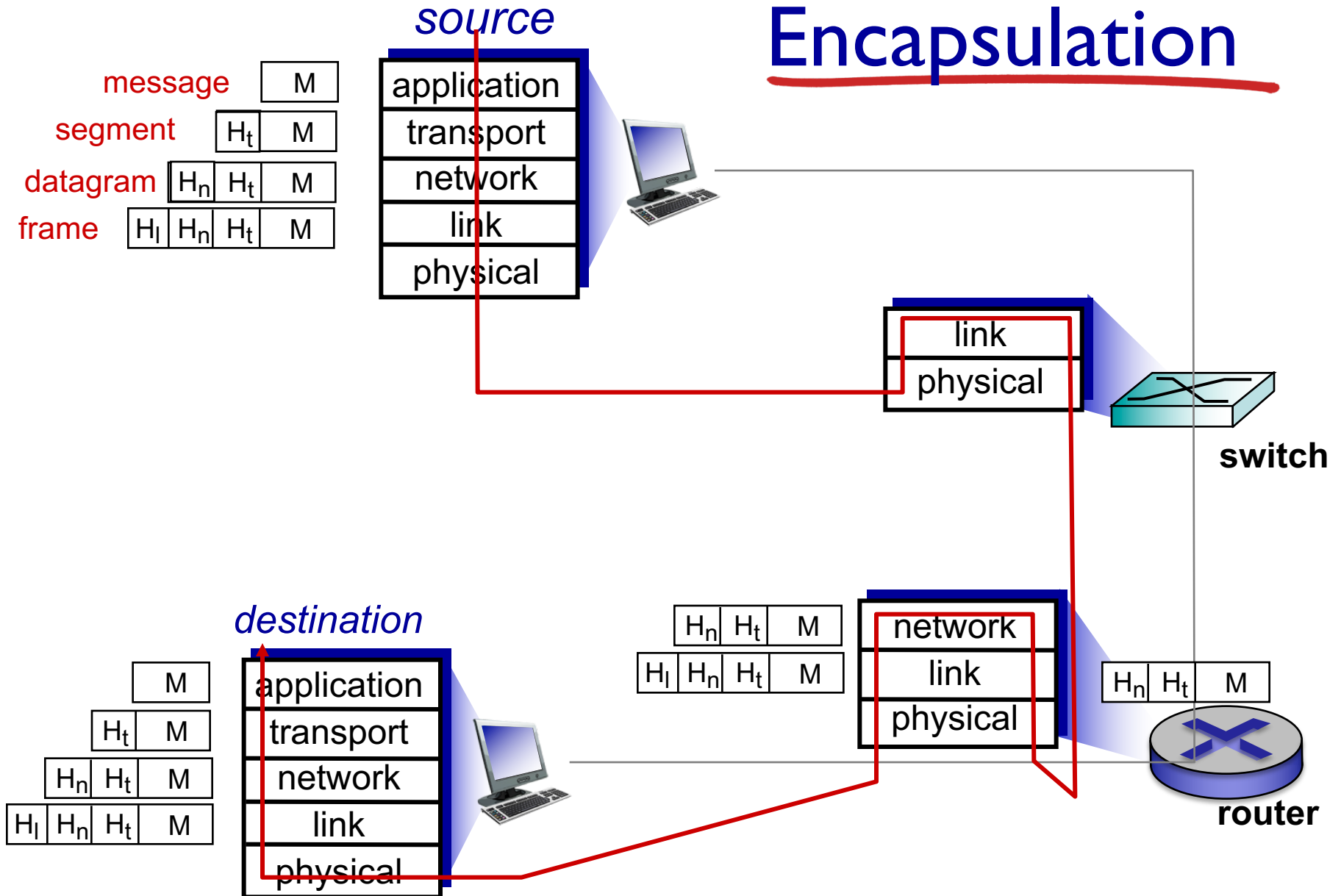


# ISO/OSI reference model

- ❖ *presentation*: allow applications to interpret meaning of data, e.g., encryption, compression, machine-specific conventions
- ❖ *session*: synchronization, checkpointing, recovery of data exchange
- ❖ Internet stack “missing” these layers!
  - these services, *if needed*, must be implemented in application
  - needed?



# Encapsulation



# Chapter 1: roadmap

1.1 what is the Internet?

1.2 network edge

- end systems, access networks, links

1.3 network core

- packet switching, circuit switching, network structure

1.4 delay, loss, throughput in networks

1.5 protocol layers, service models

1.6 networks under attack: security

1.7 history



# Network security

- **field of network security:**
  - how bad guys can attack computer networks
  - how we can defend networks against attacks
  - how to design architectures that are immune to attacks
- **Internet not originally designed with (much) security in mind**
  - *original vision*: “a group of mutually trusting users attached to a transparent network” 😊
  - Internet protocol designers playing “catch-up”
  - security considerations in all layers!

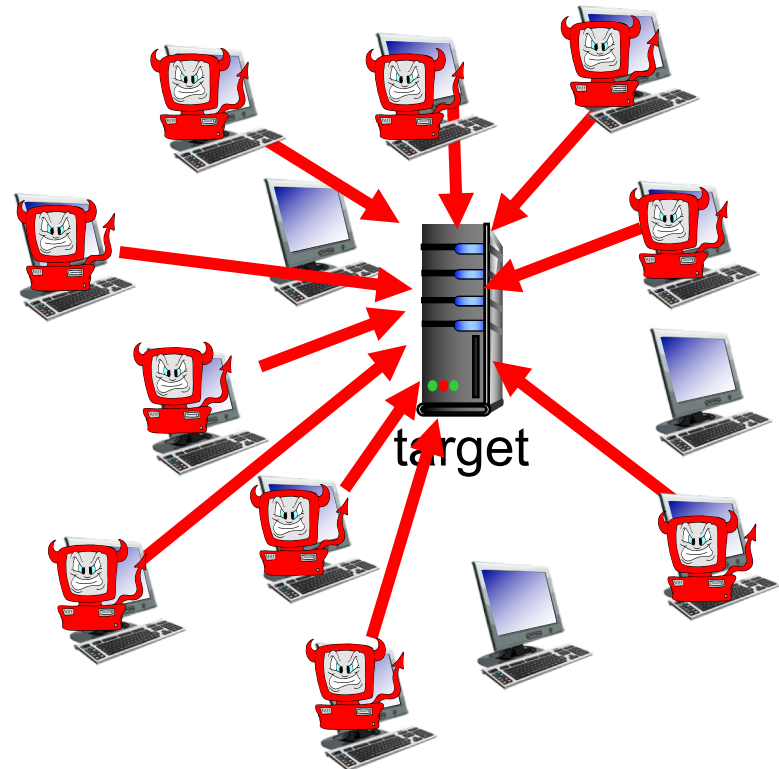
# Bad guys: put malware into hosts via Internet

- ❖ malware can get in host from:
  - *virus*: self-replicating infection by receiving/executing object (e.g., e-mail attachment)
  - *worm*: self-replicating infection by passively receiving object that gets itself executed
- ❖ **spyware malware** can record keystrokes, web sites visited, upload info to collection site
- ❖ infected host can be enrolled in **botnet**, used for spam. DDoS attacks

# Bad guys: attack server, network infrastructure

*Denial of Service (DoS)*: attackers make resources (server, bandwidth) unavailable to legitimate traffic by overwhelming resource with bogus traffic

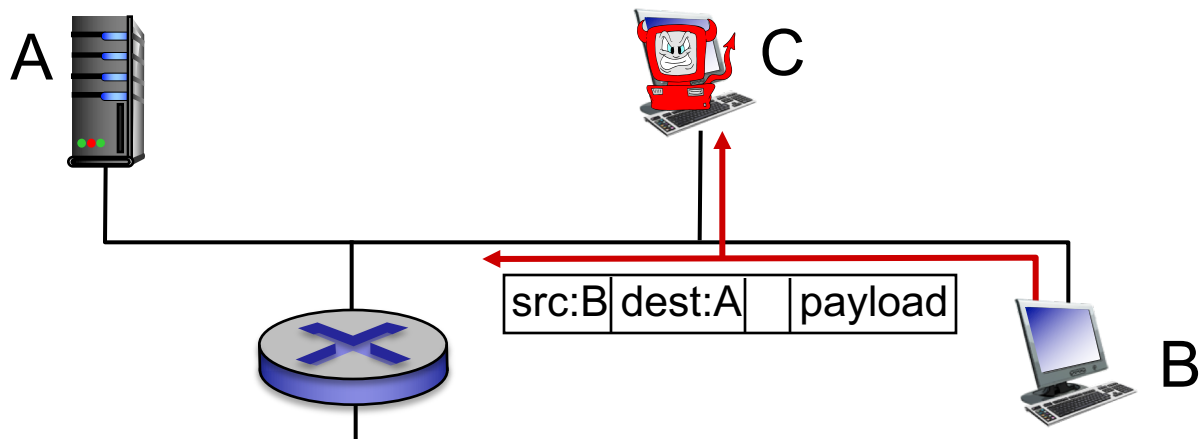
1. select target
2. break into hosts around the network (see botnet)
3. send packets to target from compromised hosts



# Bad guys can sniff packets

## *packet “sniffing”:*

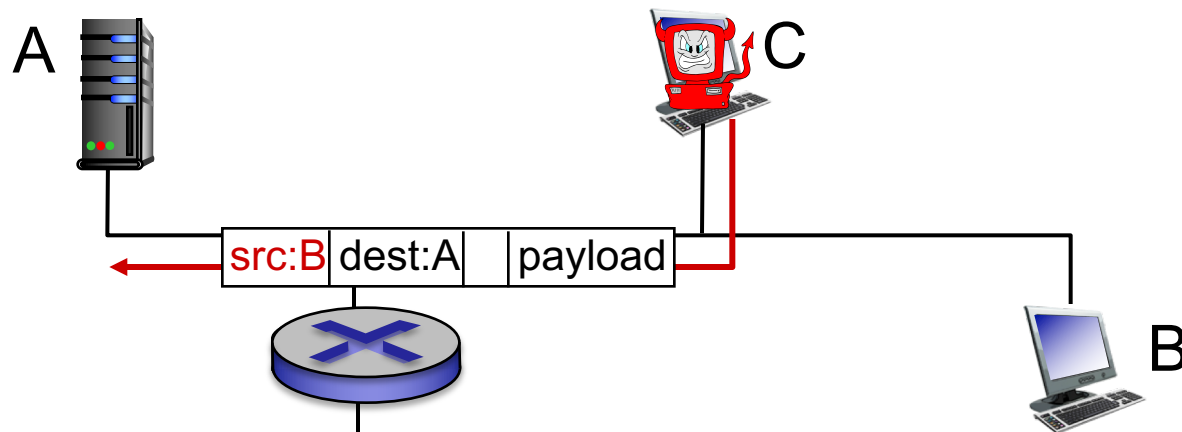
- broadcast media (shared Ethernet, wireless)
- promiscuous network interface reads/records all packets (e.g., including passwords!) passing by



- wireshark software is a (free) packet-sniffer

# Bad guys can use fake addresses

*IP spoofing*: send packet with false source address



*... lots more on security (throughout, Chapter 8)*

# Chapter 1: roadmap

1.1 what is the Internet?

1.2 network edge

- end systems, access networks, links

1.3 network core

- packet switching, circuit switching, network structure

1.4 delay, loss, throughput in networks

1.5 protocol layers, service models

1.6 networks under attack: security

1.7 history

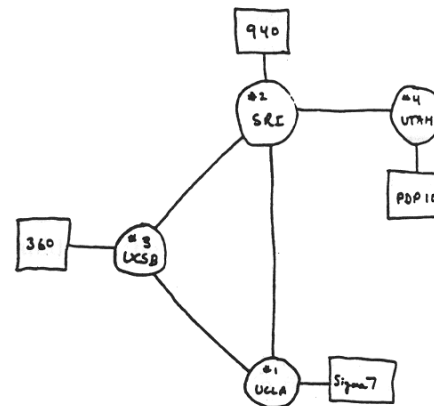
# Internet history

## *1961-1972: Early packet-switching principles*

- **1961:** Kleinrock - queueing theory shows effectiveness of packet-switching
- **1964:** Baran - packet-switching in military nets
- **1967:** ARPAnet conceived by Advanced Research Projects Agency
- **1969:** first ARPAnet node operational

### ❖ **1972:**

- ARPAnet public demo
- NCP (Network Control Protocol) first host-host protocol
- first e-mail program
- ARPAnet has 15 nodes



THE ARPA NETWORK

# Internet history

## *1972-1980: Internetworking, new and proprietary nets*

- ❖ **1970:** ALOHAnet satellite network in Hawaii
- ❖ **1974:** Cerf and Kahn - architecture for interconnecting networks
- ❖ **1976:** Ethernet at Xerox PARC
- ❖ **late70' s:** proprietary architectures: DECnet, SNA, XNA
- ❖ **late 70' s:** switching fixed length packets (ATM precursor)
- ❖ **1979:** ARPAnet has 200 nodes

### **Cerf and Kahn' s internetworking principles:**

- minimalism, autonomy - no internal changes required to interconnect networks
- best effort service model
- stateless routers
- decentralized control

**define today' s Internet  
architecture**



# Internet history

## *1980-1990: new protocols, a proliferation of networks*

- ❖ **1983:** deployment of TCP/IP
- ❖ **1982:** smtp e-mail protocol defined
- ❖ **1983:** DNS defined for name-to-IP-address translation
- ❖ **1985:** ftp protocol defined
- ❖ **1988:** TCP congestion control
- new national networks: CSnet, BITnet, NSFnet, Minitel
- 100,000 hosts connected to confederation of networks

# Internet history

## *1990, 2000 's: commercialization, the Web, new apps*

- early 1990' s: ARPAnet decommissioned
- 1991: NSF lifts restrictions on commercial use of NSFnet (decommissioned, 1995)
- early 1990s: Web
  - hypertext [Bush 1945, Nelson 1960' s]
  - HTML, HTTP: Berners-Lee
  - 1994: Mosaic, later Netscape
  - late 1990' s: commercialization of the Web

### late 1990' s – 2000' s:

- more killer apps: instant messaging, P2P file sharing
- network security to forefront
- est. 50 million host, 100 million+ users
- backbone links running at Gbps

# Internet history

## *2005-present*

- ~5B devices attached to Internet (2016)
  - smartphones and tablets
- aggressive deployment of broadband access
- increasing ubiquity of high-speed wireless access
- emergence of online social networks:
  - Facebook: ~ one billion users
- service providers (Google, Microsoft) create their own networks
  - bypass Internet, providing “instantaneous” access to search, video content, email, etc.
- e-commerce, universities, enterprises running their services in “cloud” (e.g., Amazon EC2)

# Introduction: summary

*covered a “ton” of material!*

- Internet overview
- what's a protocol?
- network edge, core, access network
  - packet-switching versus circuit-switching
  - Internet structure
- performance: loss, delay, throughput
- layering, service models
- security
- history

*you now have:*

- context, overview, “feel” of networking
- more depth, detail *to follow!*

# Review Questions

- ❖ Draw a diagram to show the standard 5-layer model (Internet protocol stack) of distributed communication.
- ❖ 4 sources of packet delay?
- ❖ Packet switching vs. circuit switching:
  - Describe both.
  - Advantages/disadvantages.