

Intelligent Agent-Based Stimulation for Testing Robotic Software in Human-Robot Interactions

Dejanira Araiza-Illan^{*}, Anthony G. Pipe[†] and Kerstin Eder[‡]

Abstract

The challenges of robotic software testing extend beyond conventional software testing. Valid, realistic and interesting tests need to be generated for multiple programs and hardware running concurrently, deployed into dynamic environments with people. We investigate the use of Belief-Desire-Intention (BDI) agents as models for test generation, in the domain of human-robot interaction (HRI) in simulations. These models provide rational agency, causality, and a reasoning mechanism for planning, which emulate both intelligent and adaptive robots, as well as smart testing environments directed by humans. We introduce reinforcement learning (RL) to automate the exploration of the BDI models using a reward function based on coverage feedback. Our approach is evaluated using a collaborative manufacture example, where the robotic software under test is stimulated indirectly via a simulated human co-worker. We conclude that BDI agents provide intuitive models for test generation in the HRI domain. Our results demonstrate that RL can fully automate BDI model exploration, leading to very effective coverage-directed test generation.

1 Introduction

Software for autonomous robotic assistants interacts concurrently with physical devices (sensors and actuators) and environments comprising people, different types of terrain, and other robots. Demonstrating that autonomous robotic assistants are ultimately fit for purpose in the real world will open the doors for the acceptance of robotic assistants in our society [10].

Testing robotic software in simulation offers the possibility of reducing costly and time consuming lab experiments, to make sure that the code meets safety and functional requirements. In addition, testing in simulation provides a degree of realism and detail that is difficult to retain when abstracting models for formal verification.

The fundamental challenge of testing robotic software is in producing realistic and interesting tests, considering that the software interacts with a complex, changing, and hard to predict environment, through sensors and actuators, that

^{*}Department of Computer Science and Bristol Robotics Laboratory, University of Bristol, Bristol, UK. Email: dejanira.araizaillan@bristol.ac.uk.

[†]Faculty of Engineering Technology and Bristol Robotics Laboratory, University of the West of England, Bristol, UK. Email: tony.pipe@brl.ac.uk.

[‡]Department of Computer Science and Bristol Robotics Laboratory, University of Bristol, Bristol, UK. Email: kerstin.eder@bristol.ac.uk.

influence its execution. Realistic and meaningful testing of robotic software means producing data inputs that are valid, whilst also emulating the interactions with the real life system, e.g. in terms of timing, order, and causality. These tests would also need to explore (cover) the software as much as possible, along with scenarios from combinations of the software and its environment [1].

A simple method to generate tests is by randomly (pseudorandomly in practice to ensure repeatability) exploring the state space of inputs or event sequences for abstract tests. Intelligent sampling via carefully chosen probability distributions can be implemented to maximize coverage and fault detection [13]. Constraints are introduced to bias test generation towards reaching more coverage faster [17, 20]. Model-based approaches explore requirement or test models to achieve biasing automatically and systematically, e.g. with model checking guided by temporal logic properties representing realistic use cases [2, 3]. Constructing models and exploring them automatically reduces the need to write constraints by hand.

In previous work, we proposed the use of coverage-driven verification testbenches for real robotic software in the context of human-robot interaction (HRI). Integrating comprehensive testing capabilities into popular robotics software development frameworks increases quality and compliance assurance at design time, and thus brings developers closer to achieve demonstrably safe robots. We implemented these testbenches in the Robot Operating System¹ (ROS) framework, and the Gazebo² 3-D physics simulator, via the following components: a driver, self-checkers (assertion monitors executed in parallel with the robot’s code), a coverage collector (based on code, assertion and cross-product coverage models), and a test generator [2, 3]. The test generation process makes use of pseudorandom, constrained, and model-based methods to produce abstract tests (sequences or programs), subsequently “concretized” by valid parameter instantiation. Examples of the testbenches in ROS-Gazebo are available online.³

Our previous model-based test generation techniques were based on model checking probabilistic timed automata (PTA) with respect to reachability temporal logic properties [2, 3]. Although these have been very effective in guiding test generation to achieve high levels of coverage, both the PTA models, often at very high abstraction levels, as well as suitable properties are required, which limits the approach in practice. This motivated us to search for different models; models that more closely match the behaviour of the actual code, models that are intuitive and that reflect the autonomy and agency present in the HRI domain.

The BDI agent architecture, proposed by the philosopher Michael Bratman to model human reasoning, offers exactly that. Using BDI, an agent’s view of the world, including its environment, other agents and itself, is captured in ‘beliefs’. BDI agents can activate plans (‘intentions’), guarded by their beliefs to achieve goals (‘desires’) [6]. BDI multi agent systems can be implemented through different frameworks, including Jason⁴ in the AgentSpeak language. For each agent and in a continuous loop, plans are selected (added to the intentions) and executed in response to ‘events’ such as the creation of beliefs or goals, by

¹<http://www.ros.org/>

²<http://gazebo.org/>

³<https://github.com/robosafe>

⁴<http://jason.sourceforge.net/wp/>

other agents or internally. BDI agents provide a reasoning mechanism, agency, rationality and causality. We stipulate that they can be used to model the interactions between robots and humans in a realistic manner, and that these models can be exploited for test generation. Our BDI agents become active components in the verification process; verification agents that are controlled through their beliefs, desires and/or intentions.

The overall hypothesis of this paper is centred on the usefulness of BDI agents for model-based test generation for the purpose of testing code of robotic assistants in HRI, giving rise to the following research questions:

- Q1.** Are Belief-Desire-Intention agents suitable to model the interactions between robots and other entities in HRI scenarios?
- Q2.** How can we generate effective tests from BDI models, i.e. how can we control BDI models to ensure they are being fully explored?
- Q3.** Machine learning techniques, e.g. reinforcement learning (RL) [26, 16], have been shown to increase the optimality of test suites automatically. Can we automate BDI model-based test generation through machine learning using coverage feedback?

In this paper we use a human-robot cooperative table assembly task as a case study. We demonstrate how BDI models can be developed for the code under test, relevant sensors and the human co-worker, all represented as BDI agents. We then generate interactive tests from the resulting multi agent system. These tests naturally incorporate the agency present in the environment of the robotic code under test, in particular the rationality and decision making of the simulated human. To explore the BDI model, we propose to manipulate the beliefs of the verification agents. This provides an intuitive method to direct test generation, and we compared different belief manipulation techniques, including manual and coverage-directed, to determine their feasibility, benefits and drawbacks. We implemented an RL algorithm, Q-learning, with a reward function on agent coverage (covered plans). This allowed us to generate tests that reach high percentages of code coverage fully automatically, much like existing machine-learning based coverage-directed test generation techniques [15].

Our results demonstrate that BDI agents are effective models for test generation, delivering realistic stimulation of robotic code in simulation of HRI. We also show that adding machine learning with coverage feedback produces an effective and varied test suite in a fully automated manner, with tests that show greater diversity compared to tests obtained using manual or pseudorandom exploration of the BDI model.

2 Related Work

Both runtime errors and functional temporal logic properties of code have been verified through model checking and automatic theorem proving. Nonetheless, tools are available only for some (subsets of) languages such as C (e.g., CBMC⁵), or Ada SPARK (e.g., GNATprove⁶), which do not suit Python code or other popular robotic frameworks such as ROS.

⁵<http://www.cprover.org/cbmc/>

⁶<http://www.open-do.org/projects/hi-lite/gnatprove/>

Different kinds of models have been employed to represent robotic software in model-based test generation processes, including Markov chains [21], UML class diagrams [27, 23], finite-state machines [4], model programs [11], hybrid automata [25], and coloured Petri Nets [19]. None of these models represent causal reasoning and planning, as BDI agents do.

As far as we can tell, this is the first work proposing the use of BDI agents for model-based test generation. Other types of verification agents (programs that plan what to do next) have been used for test generation before (e.g., in [14] to test code from UML scenario models and branch models of the code; in [22] to test other agents from models of data and an UML testing goals model).

Machine learning methods, such as RL, have been employed to aid model-based test generation. For example, a model program (rules) was explored with RL to compute optimal test-trace graphs in [26], which helped to gain more code coverage compared to random exploration by pruning the search space. Ant colonies and RL have been combined to find and learn good event sequences to test graphical user interfaces (GUIs) [8]. Also, combinatorial test generation has been improved by learning which exploration algorithm (e.g., mutations, simulated annealing) is best suited to a particular application [16, 12]. In this paper, we explored the use of RL to increase the level of automation in the test generation process. By using RL to learn which (abstract) tests increase the coverage of a BDI model, we can identify the tests most likely to increase code coverage when executed on the code under test. This is a new variant of learning-based coverage-directed test generation [15].

3 Case Study

3.1 Cooperative Table Manufacture

To assemble a table in a cooperative manner, a person requests legs through voice commands, and a humanoid torso with arms (BERT2 [18]) hands them over if it has decided the person is ready to receive them. Four legs must be handed over to complete one table.

The robot decides if a human is ready to take a leg through the combination of three sensors $(g, p, l) \in G \times P \times L$: a “gaze” sensor that tracks whether the human head is looking at the leg; a “pressure” sensor that detects a change in the position of the robot’s hand fingers indicating that the human is pulling on the leg; and a “location” sensor that tracks whether the human hand is on the leg. Each sensor reading is classified into $G = P = L = \{\bar{1}, 1\}$, where 1 indicates the human is ready, and $\bar{1}$ represents any other sensor reading. If the human is deemed ready, $GPL = (1, 1, 1)$, the robot should decide to release the leg. Otherwise, the robot should not release the leg and discard it (send back to a re-supply cycle). The sensor readings can be erroneous when the legs wobble in the robot’s hand (pressure error), or when occlusions occur (location and gaze errors). Only if the robot decides the human is ready to hold the leg, $GPL = (1, 1, 1)$, the robot should release the leg. The robot is programmed to time out while waiting for either a voice command from the human, or the sensor readings, according to specified time thresholds, to avoid livelocks. This workflow is illustrated in Fig. 1.

The robotic software for the assembly task consists of a ROS ‘node’ in Python

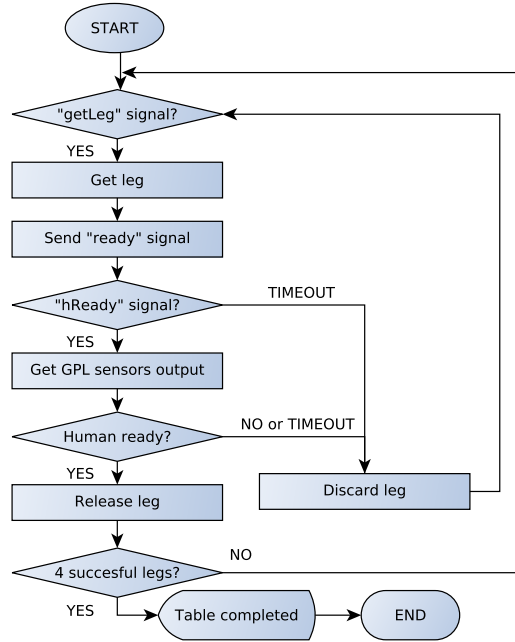


Figure 1: Cooperative table manufacture task workflow

with 264 statements. This code reads the output from the sensors, calls a third-party kinematic trajectory planner (MoveIt!⁷) to get a leg from a fixed location and then hold it in front of the human also in a fixed location, and finally decides whether to release the leg or not. The code was structured into a finite-state machine (FSM), via SMACH modules [7], to facilitate its modelling into BDI agents.

We chose to verify a representative set of requirements for this collaborative task, adapted from [2], as follows:

- R1. If the gaze, pressure and location sense the human is ready, then a leg shall be released.
- R2. If the gaze, pressure or location sense the human is not ready, then a leg shall not be released.
- R3. The robot shall not close its hand when the human hand is too close, according to the safety standard ISO 13482:2014 (robotic assistants).
- R4. The robot shall start and work in restricted joint speed (less than 0.25 rad/s), according to the safety standards ISO 13482:2014 and ISO 120218-1:2011 (collaborative industrial robots).

Req. 4 ensures that the restricted joint speed, configured in the trajectory planner, is not overridden by the code under test.

⁷<http://moveit.ros.org/>

3.2 Simulator Components

The ROS-Gazebo simulator, available online⁸, comprises:

- The robot’s control code, instrumented with code coverage metrics, via the ‘coverage’ module⁹, which produce detailed reports in html format.
- A Python module (also a ROS ‘node’ structured as an FSM) enacting the human element in the simulator, according to the tests, to stimulate the robotic software.
- Gazebo physical models of the robot, human head and hand, and table legs, to simulate motion actions in “real-time” according to the robot’s control code, and the actions of the human simulation element.
- Sensor models for “gaze”, “pressure”, “location”, and voice recognition, implemented as Python ROS ‘nodes’.
- A driver in charge of distributing test sequences to the corresponding simulation components, i.e. routing the sensor inputs, and inputs for the human simulation component.
- Assertion monitors for each one of the requirements listed before. These were formalized as temporal logic properties, translated into FSMs [2]) and implemented as Python modules (using individual ROS ‘nodes’) that run in parallel to the robotic software. The monitors produce reports of their coverage (assertion coverage), i.e. the number of times they have been triggered per simulation run.
- Coverage collection for the code and assertion results on each simulation run, through automated scripts.
- A two-tiered test generator; the first stage employs model-based techniques to produce abstract tests and the second stage concretizes these, e.g. by assigning actual values to parameters, including timing.

Figure 3 shows the testbench components in ROS-Gazebo. In ROS, the nodes, running concurrently, send and receive data through ‘publishing’ and ‘subscribing’ to topics (broadcast communication channels), or ‘requesting’ and ‘providing’ services (one-to-one single instance data passing).

4 Model-Based Test Generation with BDI Agents

4.1 Foundations

Robotic software is expected to process data inputs of different types at the same time or asynchronously, coming from sensors, actuator feedback, and different pieces of code running concurrently. In response, data output is produced, e.g. to control actuators and communication interfaces. The test environment must react to this output in an appropriate manner in order to stimulate the robotic software it interacts with. The orchestration of such complex, reactive data generation and timely driving of stimulus is significantly more demanding than generating timings for a single stream of data [20], or simple controller inputs [17].

⁸<https://github.com/robosafe/table>

⁹<http://coverage.readthedocs.org/en/coverage-4.1b2/>

tell	leg	Human voice A1 for 5s
receivesignal		Human waits for max. 60s
tell	humanReady	Human voice A2 for 2s
set_param	gaze=1	Move head from: offset [0.1, 0.2], distance [0.5, 0.6], angle [15, 40]

Figure 2: An abstract test sequence for the human to stimulate the robot’s code (LHS), and its concretization: sampling from defined ranges (RHS).

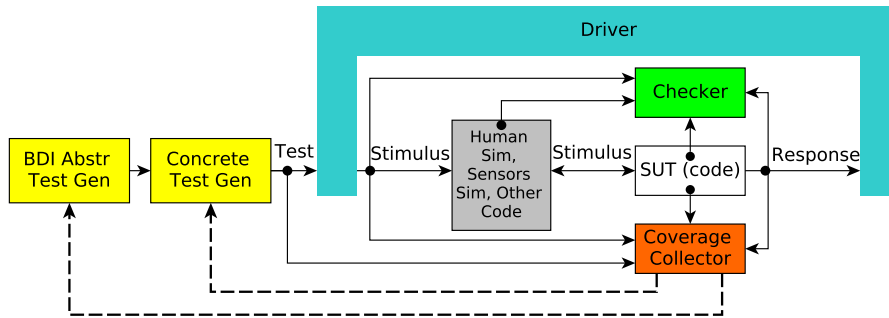


Figure 3: Two-tiered test generator (yellow), stimulating the code under test indirectly, within a testbench in ROS-Gazebo

To simplify the test generation problem, we proposed a two-tiered indirect approach [2, 3]. First, sequences of ‘actions’ are generated from traversing high-level models, producing abstract test sequences that define order and causality, thus indicating which input channels need to be stimulated with which data. Typically, these models are highly abstract to manage model complexity and the computational complexity involved in model traversal. Then, concrete data, i.e. parameter instantiation, and timing are chosen for each element in the sequence, using search-based or random approaches as in [13]. These are constrained to remain within valid data and timing ranges. The resulting tests aim to stimulate simulated entities such as humans. Their actions stimulate sensors and actuators within the simulation, which in turn will stimulate the robotic code under test.

An example of an abstract-concrete test for the table assembly task is shown in Fig. 2, adapted from [2, 3]. Figure 3 shows the two-tiered test generation process. The test generator is connected via a driver to the simulated entities that act within the robot’s environment. These stimulate the software under test, e.g. the control code in the table assembly task, and other testbench components in ROS-Gazebo. Further details on this setup are contained in [3].

Our research seeks to establish whether BDI agents are suitable abstract models for the first stage of model-based test generation in Fig. 3.

4.2 BDI-based Test Generation

BDI models need to be constructed for the software under test and all other components of the simulation that interact with the real robot in a task. The code is modelled as a BDI agent, capturing the high-level decision making present in software for autonomous robots; see [9] for a recent example. To facilitate modelling, it is useful that the robotic software under test is encoded as an

```

1 //Initial beliefs
2 //Initial goals
3 !reset.
4 //Plans
5 +!reset : true <- add_time(20);.print("Robot is resetting");!waiting.
6 +!waiting : not leg <- .print("Waiting"); !waiting.
7 +!waiting : leg <- add_time(40);.print("You asked for leg");-leg[source(human)];!grabLeg.
8 ...

```

Figure 4: Extract of the BDI agent modelling the robotic software under test in the AgentSpeak language for the Jason framework

FSM, e.g. using the SMACH module for Python, or an equivalent library in C++. The FSM structure provides an abstraction for the code, grouping it into identifiable blocks, i.e ‘states’.

A variety of interpreters and implementations are available for BDI agents. In Jason, a framework implemented in Java, multi agent systems are constructed in AgentSpeak, an agent language with a syntax similar to Prolog [6]. A BDI agent comprises a set of initial beliefs, a set of initial goals, and a set of plans guarded by a combination of goals, beliefs, and first-order statements about these. Consequently, the robot’s code is translated into a set of plans P_R . The plans’ ‘actions’ represent the functionality of the code’s FSM ‘states’, triggered by a combination of beliefs and goals. Beliefs represent sensor inputs (subscribing to topics or requesting services in ROS) and internal state variables; these lead to different plans in the BDI agents which cover different paths in the code under test. After executing a plan, a new goal is created to control which plans can be activated next, following the same control flow as the code.

An example of a BDI agent modelling the robot’s code for our case study is shown in Fig. 4. BDI models represent agency through the triggering of sequences of plans that follow an interaction protocol as a consequence of changes in the beliefs (e.g., from reading sensor outputs) and the introduction of goals. The sequences of plans are fully traceable by following the goals and beliefs that activated them. If an agent intends to execute a plan, different events, internal or external, might cause it to change its intentions.

The human and other components in the simulated HRI environment are also encoded as BDI agents, with plans P_S and a set of beliefs \mathcal{B} (of size $|\mathcal{B}|$, the number of beliefs) about the HRI protocol. We will use these to control the verification agents, to indirectly control the robot’s code agent. To achieve the overall control of the multi agent system, we introduce a ‘meta’ verification agent. This agent selects a set of beliefs from \mathcal{B} and communicates these to the human and other simulated agents, to trigger a specific set of plans $p \in P_S$. Enacting these plans will trigger changes that can be observed by the robot’s code agent (new beliefs), which will trigger plans and create new goals, leading the robot towards a path of actions indirectly, $p \in P_R$. Consequently, the execution of the multi agent system with an initial set of beliefs introduced by the ‘meta’ agent produces a ‘trace’ in the model, which is formatted into an abstract test, as shown in the left-hand side of Fig. 2. The total BDI multi agent system¹⁰ is depicted in Fig. 5.

An interesting question for the implementation of ‘meta’ verification agents

¹⁰Available online: <https://github.com/robosafe/bdi-models>

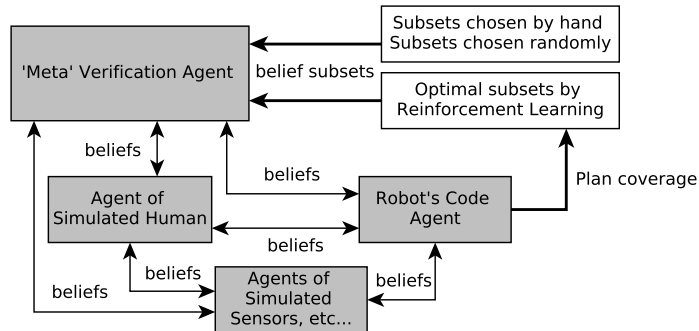


Figure 5: BDI multi agent system model for test generation. The ‘meta’ verification agent controls the human and other agents, which control the robot’s code agent. The belief subsets for each system run are chosen by hand, randomly, or learned from model coverage feedback.

is, how to choose which beliefs to use from the set \mathcal{B} , for each run of the multi agent system. The number of all the different N belief subsets $B_n \subset \mathcal{B}$, $n = 1, \dots, N$, can be quite large even for small sets \mathcal{B} . Moreover, not many of these subsets will produce different and interesting tests. We considered and compared selecting N' subsets, so that $N' \ll N$, by (a) choosing subsets that are likely to produce abstract tests that will cover most of the plans in the agents by hand; (b) selecting subsets randomly (using a pseudorandom number generator); and (c) using RL with feedback from measuring coverage of the agent plans to compute coverage-optimal subsets. These options are illustrated in Fig. 5. Coupling the BDI exploration with coverage feedback gives rise to coverage-directed test generation [15].

4.3 Reinforcement Learning

RL is an unsupervised machine learning approach; i.e. no training is needed. A Markov decision process (MDP) is an RL task that satisfies the Markov property, defined by a probability of reaching each next possible state s' from any given state s by taking action a ,

$$\mathcal{P}_{ss'}^a = Pr\{s_{t+1} = s' | s_t = s, a_t = a\}, \quad (1)$$

and an expected value of the next reward,

$$\mathcal{R}_{ss'}^a = E\{r_{t+1} | s_t = s, a_t = a, s_{t+1} = s'\}, \quad (2)$$

for a time step t [24].

The value of taking action a in state s is defined as the expected reward starting from s and taking action a , and then following a policy π , i.e. a sequence of actions according to the state of the world, $s \xrightarrow{a} s' \xrightarrow{a'} s'' \dots$,

$$Q^\pi(s, a) = E_\pi \left\{ \sum_{k=0}^{\infty} \gamma^k r_{t+k+1} | s_t = s, a_t = a \right\}, \quad (3)$$

- 1: Initialize the $Q(p, b)$ table arbitrarily
- 2: **while** $\max\{|Q(p, b)_j - Q(p, b)_{j-1}|\} < 0.0001$ **do**
- 3: Choose a belief b according to $\mathcal{P}^b_{pp'}$
- 4: Run BDI model and collect coverage
- 5: Get reward/punishment r_{t+1} from $\mathcal{R}^b_{pp'}$
- 6: Update $Q(p, b)$ in table
- 7: Update probabilities of belief selection $\mathcal{P}^b_{pp'}$
- 8: **end while**
- 9: Get optimal policy $\pi^* = \{B_1 \subset \mathcal{B}, \dots, B_{N'} \subset \mathcal{B}\}$ to form the test suite after running the multi agent system with each subset

Figure 6: Q-learning algorithm adapted for BDI-based test generation

where $0 < \gamma \leq 1$ is a discount factor that weights the impact of future rewards. Over time, the agent learns which actions maximize its discounted future rewards (i.e. an optimal policy π^*) [24].

In Q-learning, an RL variant, the values of state-action pairs (the action-value function $Q(s, a)$) are computed iteratively through the exploration of the MDP model, until they converge. The ‘best’ state-action pairs (from $\max_{a \in \mathcal{A}} Q(s, a)$) become a deterministic optimal policy.

In our setup, the actions, a , are the selected beliefs, $b \in \mathcal{B}$, to be added to subsets B_n , $n = 1, \dots, N'$, and the states, s , are the triggered plans, $p \in P_R \cup P_S$. A belief is selected with a probability $\mathcal{P}^b_{pp'}$ (from Eqn. 1), and a reward r_{t+1} (from Eqn. 2) is obtained according to the level of coverage of agent plans. From the Q-learning Q-value formulation [24], the action-state value is defined as

$$Q(p, b) = (1 - \alpha)Q(p, b) + \alpha [r_{t+1} + \gamma \max_{b' \in \mathcal{B}} Q(p', b')], \quad (4)$$

with α a learning rate that decreases over time. These Q-values are stored and updated in a table of size $|\mathcal{B}| \times |\mathcal{B}|$.

The probability distributions of the next belief choices start as uniform in the learning process, but get updated as the Q-values change according to a Boltzmann or soft max distribution,

$$\mathcal{P}^b_{pp'} = \frac{e^{\frac{Q(p, b)}{kT}}}{\sum_{b' \in \mathcal{B}} e^{\frac{Q(p, b')}{kT}}}, \quad (5)$$

where T is the ‘temperature’. After several cycles of exploration and learning, the Q-values will converge, i.e. the maximal difference, for any table cell, between the previous ($j - 1$) and current iterations (j) will be almost zero. Consequently, the learning can be stopped and an optimal policy π^* is computed from the Q-values table. This policy defines the N' optimal subsets of beliefs B_n , $n = 1, \dots, N'$, in terms of coverage of the agents. Fig. 6 shows the Q-learning algorithm adapted for BDI-based test generation.

Achieving full automation with RL requires coverage feedback loops. Directed methods, such as specifying belief subsets by hand, or randomly sampling, might appear simpler to implement. However, achieving meaningful, diverse, and coverage effective tests calls for considerable manual input to constrain and guide the exploration. For example, in our case study we have $|\mathcal{B}| = 38$, i.e. 2^{38} possible belief subsets, including: requesting 1 to 4 legs from the robot (4 beliefs); becoming bored or not (2 beliefs); and setting up combinations of

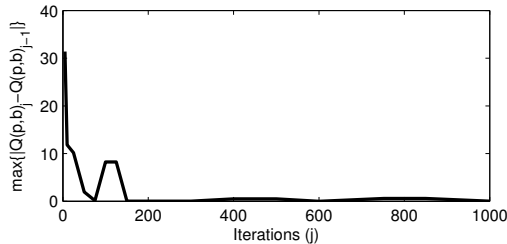


Figure 7: Computed $\max\{|Q(p, b)_j - Q(p, b)_{j-1}|\}$ for 1000 iterations in the RL algorithm

gaze, pressure and location parameters for the 1 to 4 legs ($8 \times 4 = 32$ beliefs). Most of these belief sets are not effective in exploring the leg handover code, as the interaction protocol requires particular sequences of actions to be completed within time bounds. In more complex scenarios, manually discovering which tests are more effective may no longer be feasible and a fully automated systematic process becomes a necessity.

5 Experiments and Results

We applied the proposed BDI-based test generation approach to the table assembly simulator in ROS-Gazebo to verify the control code of the robot introduced in Section 3. Three BDI model exploration methods were evaluated: (a) manual selection of belief subsets, (b) random selection; and (c) RL with coverage feedback. We used coverage data from the coverage collector (code statements and assertions) in the testbench in ROS-Gazebo to evaluate the exploration methods, and we compared these results against pseudorandomly assembling abstract tests [5].

5.1 Setup

Firstly, we produced 130 abstract tests from specifying $N' = 130$ subsets of beliefs by hand. We expected these belief sets to cover: (i) the request of 4, 3, 2, 1 or no legs per test; (ii) the human getting bored or not; and (iii) $GPL = (1, 1, 1)$ or $GPL \neq (1, 1, 1)$, all reflected in the produced abstract tests. We concretized 128 abstract tests into one test each. The remaining two abstract tests were concretized into five tests each.

Secondly, we produced $N' = 100$ subsets of beliefs, from dividing the possible 38 beliefs into six groups to target (i-iii), and then sampling beliefs through a pseudorandom number generator. This process produced 100 abstract tests, concretized into one test each.

Thirdly, we used RL, which, in approximately 300 iterations (3 hours), reached convergence of the Q-values. We then allowed it to run for a further 700 iterations (a total of 9 hours) to demonstrate the convergence, as shown in Fig. 7. The RL-based exploration of belief sets was constrained to start with the selection of 1 to 4 legs. Coverage was collected for the rewards, considering 48 plans in the ‘human’ agent, and 12 in the ‘robot-code’ agent. A fixed rate

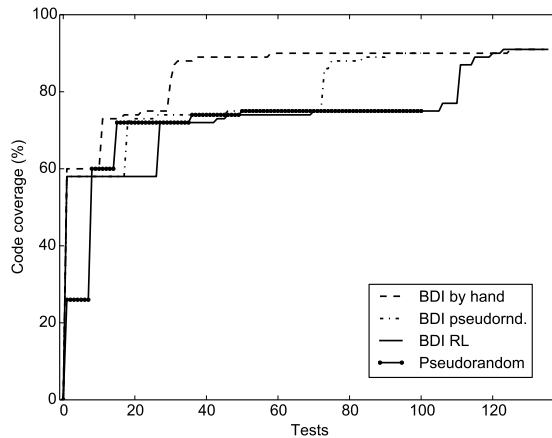


Figure 8: Code coverage percentages per test, ordered increasingly, obtained from different BDI exploration methods in model-based test generation, and pseudorandom test generation

$\gamma = 0.1$ was employed, along with a decreasing rate $\alpha = 0.1(0.9)^j$, on each iteration j . The rewards consisted of +100 for maximum measured coverage, and +5 or +1 for nearly maximum measured coverage, for each agent (‘human’ and ‘robot-code’, respectively). Punishments of -100 were applied when good coverage was not achieved. A $kT = 10$ was applied to the Boltzmann probability distributions. We extracted the best and second best belief subsets ($N' = 134$) as the optimal policy π^* , from which 134 abstract tests were produced by running the multi agent system with each B_n . We concretized each abstract test once and expected to cover (i-iii) as a result of the learning.

Finally, as a baseline for comparison, we assembled 150 abstract tests pseudorandomly, sampling from the 10 possible commands in the human’s code. These were concretized into 150 tests. Considering that the protocol for a successful table assembly requires a very specific sequence of actions, we expected these tests to reach very low coverage.

We used ROS Indigo and Gazebo 2.2.5 for the simulator and testbench implementation. Tests ran on a PC with Intel i5-3230M 2.60 GHz CPU, 8 GB of RAM, and Ubuntu 14.04. The BDI-based test generation was implemented in Jason 1.4.2. Each test ran for a maximum of 300 seconds. All the abstract test sequences, coverage reports and simulation log files are available online.¹¹

5.2 Code Coverage Results

Fig. 8 shows the code coverage reached by each test, in an ascending order. Code coverage indicates the depth to which the HRI protocol was explored. High coverage corresponds to scenarios in the table assembly protocol that are hard to reach, without any bias, as they depend on complex sequences of interactions. All three BDI exploration methods produced tests that reached the highest coverage possible. RL reached high coverage automatically, without having

¹¹https://github.com/robosafe/bdi_tests_results

Table 1: Assertion coverage with different BDI exploration methods and pseudorandom tests

Req.	BDI by hand			BDI pseudorandom			BDI RL			Pseudorandom		
	Passed	Failed	NC	Passed	Failed	NC	Passed	Failed	NC	Passed	Failed	NC
R1	90/138	1/138	47/138	7/100	0/100	93/100	24/134	0/134	110/134	1/100	0/100	99/100
R2	100/138	0/138	38/138	73/100	0/100	27/100	94/134	0/134	40/134	18/100	0/100	82/100
R3	138/138	12/138	0/138	89/100	10/100	1/100	121/134	11/134	2/134	16/100	20/100	64/100
R4	138/138	0/138	0/138	100/100	0/100	0/100	134/134	0/134	0/134	100/100	0/100	0/100

to provide additional constraints or knowledge on which tests might be more effective, although the learning process took 3 hours to complete. To speed up this process, RL could be used to optimize precomputed test sets instead of learning from zero, or more knowledge could be added to help the learning through the reward function or by providing additional constraints for belief selection.

The number of steps in the graph indicates the coverage of different decision points, which reflects test diversity. Pseudorandom exploration produced tests with less diversity compared to the other two; i.e. some code branches were not reached. Constraints would be needed to achieve greater diversity, at the cost of more manual effort. The tests generated from manually specifying belief subsets are similar to directed tests, with associated high levels of manual effort, low levels of test variety, and hence poor software and state exploration as well as limited capacity to detect requirement violations.

As expected, we obtained low coverage and diversity results for the pseudorandom generated tests, as, without any constraints, the HRI protocol is difficult to complete.

5.3 Assertion Coverage Results

Table 1 shows the assertion coverage results, containing the number of tests where the requirement was satisfied (Passed), not satisfied (Failed), or not checked (NC)—i.e. the code did not trigger the monitor.

Reqs. 2 and 4 were satisfied in all the tests. Req. 4 was programmed into the trajectory planner’s setup, and the assertion results demonstrated that the code does not interfere with this configuration. In contrast, Req. 1 was not satisfied due to a slow leg release (i.e. it took longer than the specified time threshold). Req. 3 was not satisfied. This identified a need for further crush prevention mechanisms to be added into the code to improve safety.

While the BDI methods triggered the assertion monitors of all the requirements, the pseudorandom generated tests were less effective, causing fewer checks.

5.4 Discussion

We answered **Q1** through the description of our BDI models in Section 4.2. The agency of the interacting entities is represented through the reasoning and planning cycles of the multi agent system, following their beliefs and goals. BDI models can be constructed for autonomous robots with sophisticated artificial intelligence, and our approach shows how such models can be exploited for intelligent testing.

We answered **Q2** through examining three BDI model exploration methods, each with a different strategy for belief selection, including manual, pseudoran-

dom and coverage-directed using RL. These produced a variety of tests able to find previously unknown issues in the code, whilst exploring and covering different decision points effectively.

Clear differences exist between the BDI exploration methods in terms of manual effort. RL automatically produced effective tests in terms of diverse coverage criteria, code exploration, and detection of requirement violations (through assertion coverage). Moreover, RL was able to generate tests that achieved exploration goals (*i-iii*) automatically, which answers **Q3**. The level of automation achieved by integrating machine learning into the test generation process is expected to save considerable engineering effort in practice.

So far, our approach has been applied to two relatively simple HRI scenarios, including the one on this paper. The main disadvantage of our approach is the manual effort required in the modelling. However, we believe this issue can be overcome by either building the BDI models first, and then generating the robot’s code from them, or by structuring the code in a format that allows automatic extracting of models. Additionally, the size of the BDI agents can be reduced using abstractions, where, for example, plans can be simplified by composing simple actions into abstract ones.

6 Conclusions

We presented an agent-based testing approach for robotic software that is used in HRI. Our approach indirectly stimulates the robotic code in simulation using a model of the entities the robot interacts with in its environment, including humans. We proposed the use of BDI agents to model the protocol between the interacting entities, including the robot’s code, using a two-tiered model-based test generation process from abstract action sequences to concrete parameter instantiation.

BDI agents allow modelling agency and reasoning, thus providing an intelligent mechanism to generate realistic tests with timing and individual complex data generation engines for stimulating robotic software that has high levels of concurrency as well as complex internal and external interactions. We have demonstrated that BDI meta agents can manipulate the interacting agents’ beliefs explicitly, affording control over the exploration of a multi agent model. We expect that the concept of BDI verification agents can be extended to other domains, such as microelectronics design verification.

To increase the effectiveness of the BDI verification agents in terms of coverage closure and test diversity, we have proposed the use of RL, exploiting a coverage feedback loop that systematically explores the BDI agents to construct the most effective test suite. This method overcomes the need for manually controlling test generation, which is necessary in other test generation methods, e.g. writing properties is required for model-based test generation approaches that exploit model checking, and writing constraints is required to control conventional pseudorandom test generation, whether model-based or not [2, 3].

We demonstrated the effectiveness and benefits of our BDI approach on a cooperative table manufacture scenario, using a ROS-Gazebo simulator and an automated testbench, as described in Section 3. All underlying data on the simulator, test generation methods and results are openly available from the links to Github, provided as footnotes, in this paper. The RL-based BDI

approach clearly outperforms existing approaches in terms of coverage, test diversity and the level of automation that can be achieved.

7 Future Work

We are now investigating different strategies to control the BDI agents, such as combinations of beliefs and goals, in order to gain a deeper understanding of how to design an optimal verification agent. We are also investigating what impact the addition of previous coverage knowledge to the RL process has; expecting a significant speedup.

Ultimately, we aim to move our BDI-based test generation approach online, directly integrating the verification agents into the environment the robotic code interacts with during simulation. This should allow us to obtain feedback at runtime, such as code and assertion coverage of the robotic code, and to react to the observable behaviour of the robotic code in direct interaction at runtime with the aim to automate coverage closure.

Acknowledgments

This work was supported by the EPSRC grants EP/K006320/1 and EP/K006223/1, as part of the project “Trustworthy Robotic Assistants”.

References

- [1] R. Alexander, H. Hawkins, and D. Rae. Situation Coverage – A Coverage Criterion for Testing Autonomous Robots. Technical report, Department of Computer Science, University of York, 2015.
- [2] D. Araiza-Illan, D. Western, K. Eder, and A. Pipe. Coverage-driven verification — an approach to verify code for robots that directly interact with humans. In *Proc. HVC*, pages 1–16, 2015.
- [3] D. Araiza-Illan, D. Western, K. Eder, and A. Pipe. Systematic and realistic testing in simulation of control code for robots in collaborative human-robot interactions. In *Proc. TAROS*, 2016.
- [4] D. Arney, S. Fischmeister, I. Lee, Y. Takashima, and M. Yim. Model-based programming of modular robots. In *Proc. ISORC*, pages 66–74, 2010.
- [5] D. Bird and C. Munoz. Automatic generation of random self-checking test cases. *IBM Systems Journal*, 22(3):229–245, 1983.
- [6] R. Bordini, J. Hübner, and M. Wooldridge. *Programming Multi-Agent Systems in AgentSpeak using Jason*. Wiley, 2007.
- [7] J. Boren and S. Cousins. The SMACH High-Level Executive. *IEEE Robotics & Automation Magazine*, 17(4):18–20, 2010.
- [8] S. Carino and J. Andrews. Dynamically testing GUIs using ant colony optimization. In *Proc. ASE*, pages 138–148, 2015.

- [9] L. A. Dennis, M. Fisher, N. K. Lincoln, A. Lisitsa, and S. M. Veres. Practical verification of decision-making in agent-based autonomous systems. *Automated Software Engineering*, 23(3):305–359, 2016.
- [10] K. Eder, C. Harper, and U. Leonards. Towards the safety of human-in-the-loop robotics: Challenges and opportunities for safety assurance of robotic co-workers. In *Proc. IEEE ROMAN*, pages 660–665, 2014.
- [11] J. Ernits, M. Veanes, and J. Helander. Model-based testing of robots with NModel. In *Proc. TestCom/FATES*, 2008.
- [12] A. Gargantini and P. Vavassori. Using decision trees to aid algorithm selection in combinatorial interaction tests generation. In *Proc. ICSTW*, pages 1–10, 2015.
- [13] M. Gaudel. Counting for random testing. In *Proc. ICTSS*, pages 1–8, 2011.
- [14] M. Geetha Devasena and M. Valarmathi. Multi agent based framework for structural and model based test case generation. *Procedia Engineering*, 38:3840–3845, 2012.
- [15] C. Ioannides and K. I. Eder. Coverage-directed test generation automated by machine learning – a review. *ACM Trans. Des. Autom. Electron. Syst.*, 17(1):7:1–7:21, Jan. 2012.
- [16] Y. Jia, M. Cohen, M. Harman, and J. Petke. Learning combinatorial interaction test generation strategies using hyperheuristic search. In *Proc. ICSE*, pages 540–550, 2015.
- [17] J. Kim, J. M. Esposito, and R. Kumar. Sampling-based algorithm for testing and validating robot controllers. *International Journal of Robotics Research*, 25(12):1257–1272, 2006.
- [18] A. Lenz, S. Skachek, K. Hamann, J. Steinwender, A. Pipe, and C. Melhuish. The BERT2 infrastructure: An integrated system for the study of human-robot interaction. In *Proc. IEEE-RAS Humanoids*, pages 346–351, 2010.
- [19] R. Lill and F. Saglietti. Model-based testing of cooperating robotic systems using Coloured Petri Nets. In *Proc. SAFECOMP/ DECS*, 2013.
- [20] M. Mossige, A. Gotlieb, and H. Meling. Testing robot controllers using constraint programming and continuous integration. *Information and Software Technology*, 57:169–185, 2014.
- [21] A. Namin, B. Millet, and M. Sridharan. Stochastic model-based testing for human-robot interaction. In *Proc. ISSRE*, 2010.
- [22] C. Nguyen. *Testing Techniques for Software Agents*. PhD thesis, University of Trento, 2008.
- [23] N. Pare and P. Soni. Improving model based testing using event consideration for various designs concepts. *IJCSIT*, 6(5):4718–4723, 2015.
- [24] R. Sutton and A. Barto. *Reinforcement Learning: An Introduction*. The MIT Press, 1998.

- [25] L. Tan, J. Kim, O. Sokolsky, and I. Lee. Model-based testing and monitoring for hybrid embedded systems. In *Proc. IRI*, pages 487–492, 2004.
- [26] M. Veanes, P. Roy, and C. Campbell. Online testing with reinforcement learning. In *Proc. FATES*, pages 240–253, 2006.
- [27] W. Zheng and G. Bundell. Model-based software component testing: A UML-based approach. In *Proc. ICIS*, pages 891–899, 2007.